

# THE SHOFAR

of

**TEMPLE BET YAM**

2055 Wildwood Drive

P.O. Box 860098

St. Augustine, FL 32086-1146

904-819-1875



December 2015

Kislev / Tevet 5776



חג חנוכה שמח



Happy Chanukah



## December happenings

### Shabbat Service

Friday, December 4, at 7:30 p.m.

### Sisterhood Chanukah Party

Tuesday, December 8 at 11:30 a.m.  
Gypsy Cab Comedy Club

### Men's Club Chanukah Party

Thursday, December 10 at 6:30 p.m.  
Gypsy Cab Restaurant

### Gift Wrapping at Barnes & Noble

December 19 through December- 24

### Shabbat Service and Family Chanukah Dinner

Friday, December 11 at 6:00 p.m.

## Upcoming winter events -- Mark your calendars!

### Card Party and Game Day

Wednesday, January 6, at 10:00 a.m.  
Marsh Creek Country Club

### Deli Nite

Thursday, February 4, at 6:00 p.m.

### Men's Club Breakfast and Riverboat Cruise

Thursday, February 25, at 8:00 a.m.

### Sisterhood Fashion Show

Thursday, March 24, at 11:30 a.m.  
Hammock Dunes, Palm Coast

# The Shofar

Is published by Temple Bet Yam  
2055 Wildwood Drive, PO Box 860098  
St. Augustine, FL 32086-1146  
PHONE: (904) 819-1875  
EMAIL: [templebetyam@bellsouth.net](mailto:templebetyam@bellsouth.net)  
WEBSITE: [templebetyam.org](http://templebetyam.org)

Rabbi:	Fred Raskind
Rabbi Emeritus:	Mark Goldman
President:	Terri Kamm
Immediate Past President:	Bobbi Carman
Vice President:	Denise Mensh
Religious School Director:	Heather Naughton
Recording Secretary:	Marcia Rector
Treasurer:	Art Rogove
Financial Secretary:	Nancy Sorkin
Corresponding Secretary:	Ronnie Botnick
Committees:	
Life Long Learning:	Min & Elliot Stone
Constitution:	Ileine Hoffman
Membership:	Barbara Rogove
Newsletter:	Bev Darkatsh
Publicity:	Carol Gladstone
Religious School:	Jen Sherman
Ritual:	Chuck Meiselman
Ways&Means:	Shelly Cohen & Dinah McNamara
Sisterhood:	Jackie Witte
Men's Club:	Bernie Levy
Facilities:	Jeff Kamm
Social Justice:	Andi & Joe Marx

The Shofar is published quarterly, September, December, March, and June, unless otherwise announced. There are monthly Bulletins in the off-months. It is distributed free of charge to members and advertising sponsors. Advertising inquiries should be addressed to Jen Sherman.

Deadline for submissions is the 15<sup>th</sup> of the month which precedes the month of publication. Late material will be held for the following issue.

## Inside this month's Shofar:

From the Desk of the Rabbi.....	3
News from Israel: :	
Rabbi in the Community	
From the President.....	4
Photos of Consecration and Simchat Torah.....	5
Religious School.....	6
Introducing new teachers	
Autumn Sheridan (also a new member)	
Rene` Naughton	
Ritual.....	7
Membership.....	7-9
New members	
Steve Gramet	
Sue & Frank Kinkela	
Nancy Cohen	
Ruth & Larry Kurlandsky	
Life Long Learning.....	9
Social Justice.....	9
Mitzvah Mob.....	10
Ways and Means.....	10-11
15 <sup>th</sup> Annual Brunch & Card Party	
Facilities.....	12
Kitchen & Onegs.....	12
Sisterhood.....	13-14
Book Club	
Fashion Show	
Men's Club.....	13
Poker Game	
Your Temple Family:	
Birthdays.....	15
Anniversaries.....	15
Healing Prayer.....	16
In Memoriam.....	16
Yahrzeits.....	17
Contributions.....	18-20
Celebratory Wall Plaque Form	
Contribution Form	
Trees for Israel	
Murray Weiss Memorial Fund	
Special Announcements, Events, and Other:	
Celebratory Wall Plaque.....	4
Mazel Tov! to Mackenzie Feldman.....	15
Cemetery Option.....	16
Board Notes.....	19
Child Care During Services.....	21
Spring Dates to Remember.....	21-22
Editor's Notes.....	22
Sponsors.....	23-26

## From the Desk of the Rabbi...

### ***Rabbi Fred Raskind***



#### **CHANUKAH CUSTOMS AROUND THE WORLD**

Jews in Eastern European countries celebrate the holiday by eating latkes—oil-fried potato pancakes, which take advantage of the availability of potatoes in this part of the world. Jewish immigrants brought the custom to North America.

In Israel, Jews feast on round jelly donuts called *sufganyot*, which like latkes are fried in oil. The oil symbolizes the small amount of oil the ancient Jews had to light the Temple *Menorah*, which lasted eight days. This sweet tradition increasingly makes it to dinner tables in America and other parts of the Jewish Diaspora.

Jews from India light their menorahs with wicks which have been dipped in coconut oil rather than candles, a different way to honor the miracle of the oil. Also in India, some Jews replace latkes with a food called *burfi*, a confectionary made with condensed milk and sugar.

Among Yemenite Jews, the seventh night of Chanukah is set aside as a women's holiday. This night commemorates Hannah, whose story is told in the Book of Maccabees. According to the text, Hannah and her seven sons defied the Syrian Greeks who ruled Jerusalem at the time, and she and her sons were killed for refusing to give up their beliefs.

In Istanbul, Turkish Jews sing a song commemorating the eight menorah candles called *Ocho Candelas*, and eat oil-fried fritters known as *burmelos*.

Jews in Morocco also celebrate by enjoying fried jelly donuts, but their version, called *Sfenj*, is made with the juice and zest of an orange. This might have been reinforced because the Jaffa oranges came into season as the holiday approached.

Jews in Italy share recipes for a lightly sweetened, olive oil infused, honey-covered treat called *precipizi*, which originated in Turin.

Isn't it interesting how Jewish holiday customs, traditions and foods vary from land to land around the world?

*CHAG SAMAYACH!*

#### **WHAT YOU DON'T HEAR ABOUT ISRAEL IN THE NEWS...**

From the New Times of Israel:

Want some hummus with a side of coexistence? A restaurant near the coastal city of Netanya recently started offering 50 percent off each plate of the chickpea paste at tables seating Jews and Arabs together.

A manager of the restaurant, Hummus Bar, at the M Mall in Kfar Vitkin, told The Times of Israel Monday that since it began last week the promotion's been a success. Hummus Bar took an innovative approach to getting Israelis and Arabs together in the midst of over two weeks of near daily terrorist attacks.

"Scared of Arabs? Scared of Jews?" the joint advertised in a Hebrew-language [Facebook post](#). "By us we don't have Arabs! But we also don't have Jews... By us we've got human beings!"

"And real excellent Arab hummus! And great Jewish falafel! And a free refill for every serving of hummus, whether you're Arab, Jewish, Christian, Indian, etc." the restaurant said.

Manager Kobi Tzafrir said that by the post-lunch rush on Monday, Hummus Bar had already served several tables with both Arabs and Jews, a trend that's been consistent since the ad went up on Facebook on October 13. He said the idea's been well received by Arabs and Jews alike, as well as people online from as far afield as Japan who'd heard of the initiative. Tzafrir said the move was a response to growing intolerance by both Arab and Israeli extremists and was a small step to bring people together.

The kitchen is kosher, and therefore halal as well, meaning the only thing stopping observant Jews and Muslims is the will to dine together on the hummus with stewed chickpeas and msabaha — warm chickpeas swimming in tahini.

"If there's anything that can bring together these peoples, it's hummus," Tzafrir said.

#### ***Rabbi in the Community***

From September through December, Rabbi Raskind participated in the following community activities:

- St. Augustine Interfaith Community [SAIC], which he helped co-found, Service as part of the 450<sup>th</sup> Anniversary celebration
- The re-enactment, procession and attendance at the Cathedral Mass
- The discussion at St. Cyprian's Episcopal Church with Dr. Amy-Jill Levine on Jesus, Judaism and the New Testament, and her lecture that evening. He was invited to dinner at Markland House, Flagler College, in honor of Dr. Levine, where he gave the Invocation.
- The City of St. Augustine sponsored cocktail event at the Lightner Museum in honor of the 450<sup>th</sup> Anniversary, where he and Judy met with Sean Cardinal O'Malley—a fellow Bostonian.
- SAIC meetings and the Annual Service of Gratitude, where he gave the Meditation, "100 Blessings". He also appeared on WSOS Radio with Rev. Ken Wilcox in connection with the Service.



## FROM THE PRESIDENT

Terri Kamm

Denise Mensh, Vice President



*In each edition of the quarterly Shofar, our president includes a message to the congregation. This month, president Terri Kamm has battled an illness and the passing of her step-father. Our vice-president, Denise Mensh, has stepped up to keep the business of TBY going. Denise looks forward to Terri's return to the helm and the rest of the board appreciates Denise's willingness to cover in the meantime.*

How fortunate we are to approach our Festival of Lights while enjoying the Nights of Lights of St. Augustine. The brilliant lights of our city join the candles in our menorahs as we all take a moment to enjoy the beauty which is light itself.

As we celebrate the triumph of light over darkness, it is important to think of those around us still struggling to overcome the negative forces in their lives. It is especially important at this time of year to take the time to share our good fortune with those who have less. Whether it is visiting a house-bound friend, feeding the homeless in our community, or just a random act of kindness, we should all make it a priority to share the light within us. It is by consciously choosing good will over good-for-me that our spirituality brightens, shedding its light not just on us, but on those around us. Whether you choose the Men's Club, Sisterhood, the Family Shabbat, or all three, we hope you will join us to celebrate Chanukah and add your light to our celebrations.

Temple Bet Yam has so many exciting opportunities to get involved in the coming months. We hope to see you at our Shabbat Services, lifelong learning events, and Religious School (if you do not meet the age requirements to be a student, you are still welcome to come and read a story, share a craft, or just lend a helping hand!). And mark your calendars for the world-famous TBY Deli Night scheduled for February 4, 2016.

While this season is filled with joy and thanksgiving, we remember those whose hearts have been pierced by recent tragic events. Despite the cowardly acts of those filled

Shofar columnists and the entire TBY Board of Trustees would like to wish all of you a most joyous and safe Chanukah season.

### — CELEBRATORY WALL — SIMCHA...ANNIVERSARY... GRANDCHILD...SPECIAL BIRTHDAY



Have you recently walked back to see our Celebratory Wall? Think about taking that short walk. Notice our fig tree, sit on the

bench, take time to reflect, read the plaques on the wall.

We, at TBY, thankfully have so many occasions



to celebrate. Think about celebrating a simcha in your family or honoring a TBY member by adding a plaque to the Celebratory Wall.

For additional information and order form please contact Phyllis Keiser.

with hate, we must continue to stand together against the fear the few seek to instill. In the face of pure evil, our lights of humanity, compassion, and love must shine even brighter.

As you spin your dreidels and fry your latkes, please take a moment to appreciate not only the lights outside, but the ones within us as well.

Consecration service,  
October 2, 2015  
Photo by Jen Sherman



The Religious School celebrates Simchat Torah...

Photos by Jen Sherman



...And so does the rest of the congregation!

Photos by Jane Seiden



## RELIGIOUS SCHOOL

**Heather Naughton Director  
and Jen Sherman, Representative to the Board**



Over the past three months, the students in Religious School have been busy kicking off the New Year. We enjoyed our Children's Services for both Rosh Hashanah and Yom Kippur, celebrated Sukkot by building our very own Sukkah indoors due to the rains, and marched with the Rabbi for Simchat Torah. We even celebrated Shabbat by making our own challah, challah covers, kiddush cups, and Havdalah spices. And with Chanukah approaching, we've been hard at work preparing for our Chanukah celebration.

We also welcomed two new teachers to our staff, Autumn Sheridan and Rene Naughton. Autumn has been teaching our littlest learners in the Aleph class and Rene` has been teaching our oldest students in the Gimel class. We've also been lucky to have Jackie Witte join us as a volunteer for the Gimel class. She's been working one-on-one with some of our students to improve their Hebrew skills. We can't thank her enough.

As we look ahead to 2016, we will be sharing in the joy as a number of our Gimel students become a Bar or Bat Mitzvah. We will also be doing a unit on Israel and are hopeful to connect with students in Israel as pen pals.

### All About Autumn Sheridan



I grew up in the Pacific Northwest, but after living in many places, I decided that Florida is where I wanted to be. I received my MA in Holocaust and Genocide studies as well as an MBA. After studying Ju-

daism with Rabbi Bob (who lived in Charleston but came down to St. Augustine once a month to conduct services before TBY hired a permanent Rabbi) and Rabbi Mark in St. Augustine, in 2005 I converted. I lived in Israel from 2009 to 2010 in an artist-in-residence program. When I returned to Florida, I chose to live in St Augustine since my BFF Emily Brown lives here.

I enjoy creating art and going to the beach. I am happy to be a new member of the congregation and excited to be working with the TBY Religious School as the new Aleph teacher.

### All About Rene` Naughton....



Many of you already know Rene` as she has been a member of Temple Bet Yam for many years now. She is no stranger to teaching Religious School, as she taught Religious School while both Heather and Patrick were growing up at the Congregation Sons of Israel.

Besides being a Grandmother to Gabriel, Mia, Zoe, and Wilder, Rene` volunteers at St. Augustine High School and is a member of the Flagler Hospital Auxiliary. We can't thank her enough for all of her support.



How about the wonderful photos on page 5 commemorating our Consecration and Simchat Torah services!

## RITUAL

**Chuck Meiselman**



Please don't forget our Chanukah pot luck dinner on Dec 11<sup>th</sup> at 6:00 p.m. Contact Bobbi Carmen for details and reservations. Remember this time of year is for giving and being thankful. If you cannot afford to give monetarily, consider giving your skills to help others. Sometimes it's more rewarding doing for others. I appreciate the support I have received this year from Maury, Phyllis, Gale, Emily, and all the other Temple Elves. This was very helpful when I could not work. Thank you all.

## MEMBERSHIP

**Barbara Rogove**



We want to welcome our newest members, Sue & Frank Kinkela, Helen & Henry Hirschman, Ruth & Larry Kurlandsky, Steve Gramet, Nancy Cohen, Rita Pugh, Sharon & Rodney Rice, and Autumn

Sheridan. (See *All about Autumn* in the Religious School article on the previous page.) Please make sure to say hello to them at services and make them feel welcome. We are always looking forward to new members. We have been receiving a lot of publicity in the newspapers, but we also need your help in getting the word out about how wonderful it is to be a member of Temple Bet Yam. Please contact me if you know of anyone who might be interested in joining our Temple family, or just wants information about us. Please contact me if you know of anyone who might be interested in joining our Temple family, or just wants information about us

## Introducing Steve Gramet....



My wife Pamela and I moved to St. Augustine in July of 2013. Having lived in Syracuse, New York, for the past 35 years, we were more than ready to leave the snow! We have one daughter, Rachael, who lives in Boston, Mass. and who was just married September 13<sup>th</sup>. She is a lawyer and her husband is an auditor.

My wife and I are both retired educators. Pamela is a Professor Emeritus of Physical Therapy at Upstate Medical University. She spent her entire 33 year college teaching career at Upstate. Pamela also worked for 10 years in clinical physical therapy practice. I spent 40 years in Education as a teacher, school counselor, and building administrator. I hold degrees from Ohio University, Syracuse University, and S.U.N.Y Oswego. I retired from the Syracuse City School District where I was the Director of Pupil Services.

I enjoy being outdoors as much as I can. My activities include golfing, surfing, and running. I have done some volunteering in St. Augustine and look forward to participating in the Men's Club and Social Action groups.

We are very happy to be here in St. Augustine!

### Introducing Sue and Frank Kinkela....



Sue and I met in an AOL "Over 40" chat room when we were both looking to start over after earlier marriages and two grown children each. We fell completely and madly in love and Sue honored me with her hand in marriage in 2004. As a surprise to Sue prior to our vows, I converted to Judaism.

Sue was born on the lower east side of Manhattan, graduated with a degree in Fine Arts from Hunter College, and has lived in New York City, New Jersey, South Florida, and Monroeville, PA, where I was born, 20 miles from Pittsburgh. I attended the University of Pittsburgh, and spent the last twenty years living in Monroeville, where I worked as a sales engineer with Cummins, Inc. for 21 years, retiring early last July. While living in Monroeville, Sue was employed by

United Healthcare as a Credentialing Specialist. In fact, she was able to transport her job with her and is still working full time.

We love all Pittsburgh sports: Pirates, Steelers, and Penguins. We love visiting museums, oldies rock concerts, the symphony, Broadway plays, and historical sites. We are both huge Beatle fans and have collected memorabilia over the years together. Sue attended The Beatles Shea Stadium Concert in August 1965 which just celebrated its 50<sup>th</sup> anniversary. I enjoy golf, although I'm not very good at it. Sue enjoys mah jongg, but hasn't been able to play for some time. We own an original 1964 ½ Ford Mustang and enjoy going for weekend drives and attending classic car events

We decided to move to St. Augustine to get away from many years of snow, ice, biting winds, and cold weather. It's wonderful knowing that there is no need to shovel the sunshine.

We also chose this area because we are close to at least two of the kids. We spend the large majority of our vacation time traveling the country visiting the kids and grandkids (what else is there?)

I have two married daughters, one in Atlanta and one in wherever the air force takes them, and three grandchildren. Sue has one married son living in Hazlet, NJ, with his wife and son. She also has a daughter Meryl who, after her recent marriage, lives in St. Augustine.

### Introducing Nancy Cohen....



I am originally from Northern New Jersey (Teaneck and Closter), where I grew up, married, and raised my family. Now I call St. Augustine home since July of 2015, presently living in nearby Murabella.

I am a single empty nester with a 21 year-old son named Daniel whom I adore. Daniel is in architecture school in Philadelphia and comes home on his school breaks and holidays. My siblings and extended family all live in Northern NJ and come to visit frequently.

I completed my BHS in Clinical and Community Dietetics from the University of Florida-Gainesville and feel very comfortable in the Northern Florida area. I have been a Registered Dietitian Nutritionist for 33 years and also work in the Healing Arts offering Reiki and Integrated Energy Therapy, currently in private practice working with Adults and Children in the community and nationwide. I have a business called Feeding The Body Feeding The Soul.

One of my greatest personal accomplishments is that I had a wonderful Adult B'nai Mitzvah in 2009 with four other women at Temple Beth El, Closter, NJ. Being a part of the Jewish Community, and remembering my roots, my traditions, and my rights as a Jewish woman mean a tremendous amount to me. I look forward to becoming an active member in the Temple Community.



## Introducing Ruth and Larry Kurlandsky....



We moved to Ocean Villas on Anastasia Island, just this past August, trading snow for sand. We moved from a suburb of Syracuse, NY, (the snowiest major city in the U.S.), where we had lived for 10 years. We both hail from the Midwest, met at the University of Michigan, and have managed to live in three of the snowiest major cities in the country. Enough! A little bit about us: Ruth is a retired community college faculty member/administrator. Sometime after earning her Ph.D. in Education Administration, she earned a Masters in Jewish Studies. A second career as a Religious School principal was fascinating. Quilting is one of her interests and she would love to hear from others who enjoy the craft. Larry is a retired pediatric pulmonologist/allergist, who is still willing to write papers and give talks. He

even taught Sunday school, and had a story published in the modern Midrash genre. Now photography is avidly pursued and he's trying to hone his beach bum skills.

We were introduced to the wonders of St. Augustine Beach and the city first through the generosity of a friend, and then through attendance at a Road Scholar program about the wonders and special allure of this historic city. After vacationing here a number of times, the draw to be here permanently became overwhelming.

More importantly, we are the proud parents of three children: Shana, Hillel, and Mara. Shana and her husband, Daniel, have three active sons; Ruth and Larry are learning all about hockey and gymnastics, and perpetual motion. Hillel and his wife, Keren, have one daughter, who wants Grandma to do her hair even after she had returned home. All four of the grandchildren live in Toronto—a completely unintended consequence of us sending our children to Camp Ramah in Canada (while we lived in Michigan). Mara is a museum specialist in D.C. and envisions grandchildren for us one day.

We are looking forward to getting to know the TBY family and sharing holidays and special events.

## LIFE LONG LEARNING

*Min & Elliot Stone*



Life Long Learning has enjoyed some very interesting discussions this year, such as the topics dealing with food, prayer, and the different branches of Judaism.

We look forward to our next discussion which will be a brown bag luncheon on Jan. 27<sup>th</sup>, at 11:30 a.m. The topic for discussion will soon follow. Look for an e-blast. If you have any ideas for discussion, please email us.

## SOCIAL JUSTICE

*Andi & Joe Marx*



Joe and I hope you had a great Thanksgiving. Dining With Dignity is going well but we still need some more volunteers for June through the summer months. It is a worthwhile experience. If you have teenagers, they are welcome to join us. St Francis House had called us and said they are low on food and other items so we had another food drive for Thanksgiving. We may have another one around Passover. Some of our choir members participated in an Interfaith Service at San Sebastian Catholic Church on November 19<sup>th</sup>. It was a service of gratitude, followed by a pot luck dinner. Rabbi Fred gave the sermon. It was well attended and a very uplifting experience.

## LOOKING TO DO A MITZVAH?

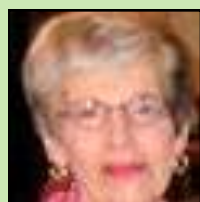
### Mitzvah Mob

**Ronnie Botnick**



Just a reminder that the Mitzvah Mob is available to offer transportation or other assistance to any member in need.

Instead of paying someone for rides to the airport or medical appointments or requests for help in your home, let us offer our services. Do thank us with a donation to the temple. Call Ronnie Botnick to request or volunteer services.



## WAYS AND MEANS

**Shelly Cohen**

*and*

**Dinah McNamara**



Can it really be December? Ways and Means has a busy calendar with some tried-and-true events as well as some new.

1. Nancy Sorkin is heading up this year's Barnes and Noble Gift Wrapping Fundraiser. I believe that Nancy has filled almost all time slots. If you are interested in signing up, quick call Nancy to see if any spots are left. There are also occasional last minute schedule conflicts so she would appreciate knowing who might be able to step up and help. This is always a great time meeting with people as they shop and telling them about Temple Bet Yam. Oh and wrapping presents.
2. The 15th Annual Brunch and Card Party will be held on January 6, 2016, at the Marsh Creek Country Club. Festivities start at 10:00 a.m. with a Continental Breakfast and complimentary mimosas. There will be a buffet lunch and, of course ..... desserts. We are requesting that members of TBY bring a door prize. Please bring something you would want to win.(See the enclosed attachment for the reservation form)
3. Without much time in between, we move right into Deli Night on Thursday, February 4, at 6:00 p.m. Save the date. More information will be in found in Temple E-Blasts. Oh, and very exciting entertainment is already booked!! Lee Weaver will be performing his Stand-Up comedy routine.
4. Finally, save the date for TBY's first Kugel Kook Off March 12<sup>th</sup>, so sharpen your recipes.

See you all at the next event...



Wednesday, January 6, 2016  
10am to 2pm



Marsh Creek Country Club

169 Marshside Drive St. Augustine Florida 32080

Door  
Prizes!

Mah Jongg Bridge

Scrabble Rummy Q

Poker Canasta



Donation to Temple Bet Yam: \$30

Continental Breakfast at 10am

with a complimentary Mimosa

Buffet Lunch with Desserts at Noon



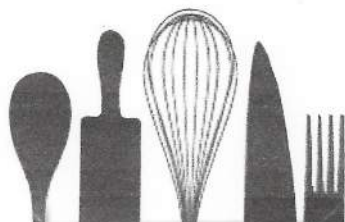
## FACILITIES

Jeff Kamm



**Just look how beautiful our grounds look  
after the fall clean up and driveway improvement!**

*Photos by Jeff Kamm*



**TO KEEP OUR KITCHEN ORGANIZED**

**LET'S ALL  
CLEAN AND PUT AWAY WHAT WE USE  
PUT THINGS WHERE THEY BELONG  
TAKE ALL FOOD HOME**

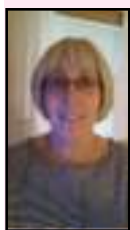
### ONEGS

Reminder: Onegs are a responsibility of Temple membership, not just of Sisterhood. If you have not yet signed up for a date, please contact Bev Darkatsh at [bdarkatsh@gmail.com](mailto:bdarkatsh@gmail.com). Thanks.

## SISTERHOOD AND MEN'S CLUB ACTIVITIES

### SISTERHOOD

*Jackie Witte*



We enjoyed a wonderful afternoon of fun, food, and jewelry making at our meeting on November 10.

The Fashion Show committee is still looking for a couple of models to wear Patchington fashions at the Fashion Show on March 24, 2016. Contact Jackie if you're interested in an afternoon on the runway.

Patty Savage has done a marvelous job organizing and selling items in the gift shop. She and her elves open the shop before most services for your shopping pleasure. Next opening is December 4.

We look forward to seeing you all at our Chanukah luncheon to be held in the Gypsy Cab's Comedy Room this coming Tuesday, December 8, at 11:30. Unwrapped gifts and/or gift cards are for young women and their babies and toddlers in need of everything.

Our next Sisterhood meeting will be January 12, 2016, 1:00 p.m. at Temple Bet Yam. Looking forward to seeing you there.

### Book Club News

December: There will be no meeting in December.

January 19<sup>th</sup>: Red Notice: A True Story of High Finance, Murder, and One Man's Fight for Justice, by Bill Browder. Discussion led by Ileine Hoffman and Bev Darkatsh.

February 16<sup>th</sup>: The Marriage of Opposites by Aliice Hoffman. Discussion led by Bobbi Carman and Terre Wallach.

When possible, the book club meetings will be on the second Tuesdays of the month. Please RSVP directly to discussion leaders.



### MEN'S CLUB

*Bernie Levy*



The Men's Club has a whole host of activities scheduled for the end of 2015 and on into 2016. Men, be sure to attend the annual Chanukah party which will be held

at the Gypsy Cab restaurant on December 10. You can expect Gypsy's famous latkes as well as some fun games and of course some great food. RSVP to Elliot Stone.

On February 25, we will be exploring some of Florida's most scenic areas. We will be traveling to De Leon Springs for an amazing breakfast at the Old Sugar Mill Restaurant. You've never experienced food this way, so join us. Both men and women are invited on this trip. Breakfast will be followed by a guided river boat cruise leaving from Blue Springs State Park. RSVP to Earl Brown or Bernie Levy.

There's a great deal more to come. Stay tuned for more info.

If anyone is interested in joining the off-site poker club, please contact Sheldon Beasley. Though we have a full house, please let us know if you want to be placed on the waiting list or be advised of future games.



**THURSDAY, DECEMBER 10, 6:30 p.m.**  
**Men's Club Chanukah Party**  
**Gypsy Cab**







## OUR TEMPLE FAMILY

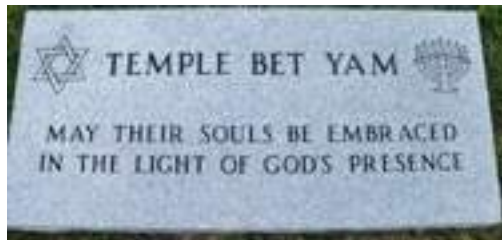
## Mazel Tov! Look what we have done!

A great big OOH RAH!  
to Mackenzie Feldman,  
who will be leaving in December for Camp Lejeune to begin her Marine Corps training! In this photo, Maury Keiser is giving her a hug during the November 6<sup>th</sup> Veterans' Day service. to keep her safe in her journey ahead.



Photo by Henry Seiden

Let us know of your accomplishments...  
this is the spot to brag!  
It's all in the family,  
and we're proud of each and every one of you!



## TEMPLE BET YAM CEMETERY

Temple Bet Yam recently consecrated a portion of The Craig Memorial Park on Old Moultrie Road in St. Augustine as sacred burial ground in the philosophy and theology of Reform Judaism. This portion is dedicated to Temple Bet Yam, and all Temple members are eligible to purchase burial plots in the TBY section of the Memorial Park. Members may purchase burial plots for themselves, their spouses, their partners, their children, and/or their parents. Following Reform Jewish philosophy, there are no restrictions concerning burial of non-Jewish spouses or partners adjacent to their loved ones.

Those interested in purchasing burial plots as part of their preplanning should contact C. J. Kidd at Craig Memorial Park directly (904-824-1672). The current cost of a burial plot includes perpetual care.

For further information or questions, contact Marty Cohen.

# Trees for Israel

*Toby Weintraub*



We are enjoying huge success with our Trees for Israel. Every tree purchased is not only recognition of some significant event in your life or in the life of someone close to you but is also a mitzvah for Israel and contributes to our Temple fundraising effort. Please use this very important program as a memorial to a friend or loved one or in celebration of a happy occasion for someone dear to you.







# Let Us Celebrate! Let Us Rejoice!

Do you have a simcha you want to commemorate?



*Birth of a grandchild or child?  
Wedding? Anniversary?  
Milestone Birthday? Bar/Bat Mitzvah?*

Now you or your family can purchase  
a plaque to celebrate life's big moments.



sample of an  
actual plaque!

(actual size 5 1/2" X 8 1/2")

Express your joy in four lines of type for \$180  
which includes the plaque, engraving and installation in  
TBY's commemorative garden wall.




For more information and forms, please  
contact the TBY office at 904-819-1875 or  
email [templebetysame@bellsouth.net](mailto:templebetysame@bellsouth.net)





The custom of making offerings/donations as an expression of prayer traces back to Biblical times and has always been a practice of congregations. A donation can be defined as an act of prayer in which the participant extends himself or herself beyond the act of uttering words. It exceeds mere vocal expression and indicates that an act of personal sacrifice has been performed by the donor. The amount of an offering is less important than the deed. A small offering made by a person of limited income is as noble in nature as a larger one given by a person of wealth. THE WORLD IS SUSTAINED BY THREE THINGS: BY TORAH, BY WORSHIP, AND BY TZEDAKAH.

 Please note that there are separate forms available in the Temple office for plaques for both the Memorial Board in the sanctuary and for the Celebratory Wall in the garden. Do NOT use the attached Contribution form for this purpose.



**Shalom**

## Board Notes

### *Reminder:*

Any member of the congregation who desires to do so may attend Board meetings as an observer. Meetings are held the first Tuesday of each month, beginning at 6:30 p.m. Anyone who wants a copy of the minutes should contact Marcia Rector.



## CONTRIBUTION FORM

TEMPLE BET YAM  
P.O. BOX 860098  
ST. AUGUSTINE, FL 32086-1146

DONOR NAME: \_\_\_\_\_

ADDRESS: \_\_\_\_\_

CITY/STATE: \_\_\_\_\_

ZIP: \_\_\_\_\_ TEL. NO.: \_\_\_\_\_

IN HONOR OF: \_\_\_\_\_

\_\_\_\_\_

\_\_\_\_\_

\_\_\_\_\_

IN MEMORY OF, OR OTHER DESIGNATION:

\_\_\_\_\_

\_\_\_\_\_

\_\_\_\_\_

\_\_\_\_\_

NAME & ADDRESS OF HONOREE OR FAMILY MEMBER IF NOT A MEMBER OF TEMPLE BET YAM:

\_\_\_\_\_

\_\_\_\_\_

\_\_\_\_\_

<u>DESIGNATION</u>	<u>AMOUNT (\$)</u>
--------------------	--------------------

GENERAL FUND	\$ _____
--------------	----------

RELIGIOUS SCHOOL FUND	\$ _____
-----------------------	----------

PRAYER BOOK FUND	\$ _____
------------------	----------

SANCTUARY FUND	\$ _____
----------------	----------

TORAH FUND	\$ _____
------------	----------

MURRAY WEISS MEM. FUND	\$ _____
------------------------	----------

HIGH HOLY DAYS CONTRIBUTION	\$ _____
-----------------------------	----------

* RABBI DISCRETIONARY FUND	\$ _____
----------------------------	----------

<b><u>TOTAL CONTRIBUTION:</u></b>	<b>\$ _____</b>
-----------------------------------	-----------------

\* PLEASE NOTE: A SEPARATE CHECK IS REQUIRED FOR THE RABBI DISCRETIONARY FUND.

PLEASE MAKE PAYABLE TO TBY, WITH NAME OF FUND ON MEMO LINE.. THANK YOU.





### Beineinu

#### Congregants helping Congregants

In the spirit of giving( tsdakah) the “MURRAY WEISS MEMORIAL FUND” has been actively helping those in need. Since its inception the fund has helped to finance the following:

- \*Dental surgery
- \*Tuition for two children's enrollment in a Jewish summer camp
- \*Paid a past due mortgage payment
- \*Helped finance medication for a cancer patient
- \*Provided funds for a past due electric bill.

With the continuing contributions to this meaningful tsdakah fund by you, the congregants and the Murray Weiss foundation, it can continue to face the needs of those who require it.

Let us all be there for those who need the help and guidance for a healthier and more meaningful life.

Please contact me for any questions or information.

Please know that this program is held in the strictest confidence.

Shalom, Mimi Selig

### Do you need Child Care during services?

Please welcome Sarah Ramirez as our new child care provider for 2015-2016! Sarah is a student at the University of St Augustine where she is studying Occupational Therapy and also works as a Rehab Technician in the therapy department at Flagler Hospital. Sarah loves children, is extremely responsible, and has a lot of energy; we are thrilled to have her join us this year.

As a reminder, child care is provided free of cost during most regular Friday night Shabbat services. For safety, children need to be old enough to walk, and Sarah cannot be responsible for changing diapers, accompanying children to the restroom, or bottle feeding little ones. We encourage your child to bring a quiet activity to play with, and also ask that they do not run back and forth between child care and the sanctuary too much during services. Thank you very much to Temple Bet Yam for providing this service to families, and welcome to Sarah!

*We look forward to seeing all of you at our Shabbat services.*

### December (2015), January, and February (2016) Dates to Remember:

**Tuesday, December 1**  
6:30 - 8:00 p.m. Board Meeting

**Wednesday, December 2**  
10:00 a.m. - 12:00 noon. Text Study Group

**Friday, December 4**  
7:30 p.m. Regular Shabbat Service

**Saturday, December 5**  
5:30 - 6:00 p.m. First Candle for Chanukah

**Sunday, December 6**  
9:00 a.m. - 12:00 p.m. Religious School

**Monday, December 7**  
6:00 - 9:00 p.m. Choir Practice

**Tuesday, December 8**  
11:30a.m. - 2:00 p.m. Sisterhood Chanukah Party  
Comedy Club at Gypsy Cab Restaurant  
Bring gifts for young women & babies in need

**Wednesday, December 9**  
10:00 a.m. - 12:00 noon. Text Study Group

**Thursday, December 10**  
11:30 a.m. - 2:00 p.m. Men's Club Chanukah Party  
Gypsy Cab Restaurant

**Friday, December 11**  
6:00 p.m. Shabbat Service  
& Family Chanukah Dinner

**Sunday, December 13**  
9:00 a.m. - 12:00 p.m. Religious School

**Monday, December 14**  
6:00 - 9:00 p.m. Choir Practice

**Saturday, December 19 through Thursday, December 24**  
Barnes & Noble Gift Wrapping

**Sunday, December 20**  
NO Religious School

**Monday, December 21**  
(SJCPS Winter Break until January 4)  
6:00 - 9:00 p.m. Choir Practice

**Thursday, December 24**  
(Christmas Eve)

**Friday, December 25**  
(Christmas Day)

**Sunday, December 27**  
NO Religious School

**Monday, December 28**  
6:00 - 9:00 p.m. Choir Practice

**Thursday, December 31**  
(New Year's Eve)

**WATCH FOR E-BLASTS FOR REMINDERS OF SHABBAT SERVICES AND OTHER EVENTS THROUGHOUT THE WINTER..**



Winter Calendar, continued....

<b>Friday, January 1</b> (New Year's Day)	<b>Monday, February 1</b> 6:00 - 9:00 p.m. Choir Practice
<b>Sunday, January 3</b> NO Religious School	<b>Tuesday, February 2</b> 6:30 - 8:00 p.m. Board Meeting
<b>Monday, January 4</b> 6:00. - 9:00 p.m. Choir Practice	<b>Thursday, February 4</b> 6:00 - 9:00 p.m. Deli Nite Lee Weaver, stand-up comedy
<b>Tuesday, January 5</b> 6:30 - 8:00 p.m. Board Meeting	<b>Friday, February 5</b> 7:30 p.m. Shabbat Service
<b>Wednesday, January 6</b> 10 a.m. - 2:00 p.m. 15th Annual Brunch & Card Party Marsh Creek Country Club	<b>Sunday, February 7</b> 9:00 a.m. - 12:00 p.m. Religious School
<b>Friday, January 8</b> 7:30 p.m. Shabbat Service	<b>Monday, February 8</b> 6:00. - 9:00 p.m. Choir Practice
<b>Sunday, January 10</b> 9:00 a.m. - 12:00 p.m. Religious School	<b>Thursday, February 11</b> 1:00 - 2:30 p.m. Sisterhood Meeting
<b>Monday, January 11</b> 6:00. - 9:00 p.m. Choir Practice	<b>Sunday, February 14</b> 9:00 a.m. - 12:00 p.m. Religious School
<b>Tuesday, January 12</b> 1:00 - 2:30 p.m. Sisterhood Meeting	<b>Monday, February 15</b> 6:00. - 9:00 p.m. Choir Practice
<b>Sunday, January 17</b> 9:00 a.m. - 12:00 p.m. Religious School	<b>Tuesday, February 16</b> 7:30 - 8:45 p.m. Sisterhood Book Club <u>The Marriage of Opposites</u> , by Alice Hoffman. Discussion led by Bobbi Carman and Terre Wallach.
<b>Monday, January 18</b> 6:00 - 9:00 p.m. Choir Practice	<b>Sunday, February 21</b> 9:00 a.m. - 12:00 p.m. Religious School
<b>Thursday, January 19</b> 7:30 - 8:45 p.m. Sisterhood Book Club <u>Red Notice: A True Story of High Finance, Murder</u> <u>and One Man's Fight for Justice</u> , by Bill Browder Discussion led by Ileine Hoffman & Bev Darkatsh.	<b>Monday, February 22</b> 6:00. - 9:00 p.m. Choir Practice
<b>Saturday, January 23</b> 10:00 a.m. - 12:00 p.m. Congregational Shabbat Service	<b>Thursday, February 25</b> 8:00 a.m. - 4:00 p.m. Men's Club Breakfast & Riverboat Cruise Blue Springs State Park
<b>Sunday, January 24</b> 9:00 a.m. - 12:00 p.m. Religious School	<b>Friday, February 26</b> 7:30 p.m. Shabbat Service
<b>Monday, January 25</b> 6:00 - 9:00 p.m. Choir Practice	<b>Saturday, February 27</b> 10:00 a.m. Rivka & Aaron Fuhrmann B'Nai Mitzvah
<b>Wednesday, January 27</b> 11:30 a.m. - 1:00 p.m. Life Long Learning	<b>Sunday, February 28</b> 9:00 a.m. - 12:00 p.m. NO Religious School
<b>Sunday, January 31</b> 9:00 a.m. - 12:00 p.m. Religious School	<b>Monday, February 29</b> 6:00. - 9:00 p.m. Choir Practice

## EDITOR'S NOTES

Bev Darkatsh



I owe a big debt of gratitude to the sharp eyes and grammatical acumen of my two copy-editor elves, Nancy Sorkin and Jackie Witte and to my new Mail Maven, Shelly Cohen.



We'd like to thank you for making the decision to take the Shofar on line instead of being mailed a print version. It's one of the privileges of membership to receive it this way and also part of the process of the Temple going green -- better for ecology, saves trees and energy. It's also better for the Temple in that it saves us the cost of paper and postage. You can still print it out yourself if you'd prefer to read it that way -- I do.

In order to become self-supporting, the *Shofar* is in need of additional advertisers. Please submit the names of the businesses you frequent and the professionals you use so that we can contact them as potential advertisers. You do not have to contact them personally; our *Shofar* advertising lady, Jen Sherman, will do it. All referrals will remain anonymous. Please contact Jen.

## FIRST ANNUAL TEMPLE BET YAM PUTTING TOURNAMENT

To Benefit The First Tee of North Florida and Temple Bet Yam Children's Programs

Was Held at The World Golf Hall of Fame

Sunday, October 25, 2015

A Special "Thank You" TO STUART SOROKA, M.D.

AND

AMIRO GALLERIES

BB&T

Best Bank In Town  
Since 1872

BEV DARKATSH



HAL AND JANE GRAY



MIMI SELIG

MTX, LLC PAUL LIETZ  
BUILDING HOME MAINTENANCE  
CONTRACTOR



PAUL & PHYLLIS  
GREENFIELD



SID ANSBACHER  
&  
SUSAN PONDER-STANSEL



Matanzas River  
Animal Hospital



# SUPPORT OUR ADVERTISERS

## RIVER GARDEN IS *OUR* COMMUNITY AGENCY

SEVEN-TIME RECIPIENT OF THE PRESTIGIOUS  
**GOVERNOR'S GOLD SEAL AWARD**  
FOR EXCELLENCE IN LONG-TERM CARE



AGENCY FOR HEALTH CARE ADMINISTRATION  
**A 5-STAR RATED COMMUNITY**  
CENTERS FOR MEDICARE and MEDICAID SERVICES



Personalized Care With Exceptional Results

904-886-8454

[rivergarden.org/rehab](http://rivergarden.org/rehab)

Rehabilitation



Peace of Mind in a Supportive Environment

904-288-7858

[rivergarden.org/adultday](http://rivergarden.org/adultday)

Adult Day Care



Elegant Retirement Living for Active Seniors

904-292-2683

[rivergarden.org/coves](http://rivergarden.org/coves)

Independent Living



Enabling Clients to Remain In Their Homes

904-288-7851

[rivergarden.org/homehealth](http://rivergarden.org/homehealth)

Home Health Care

 **RIVERGARDEN | SENIOR SERVICES**

Rehabilitation | Adult Day Care | Home Health Care | Long-Term Care | Memory Care | Independent Living

Jewish Dietary Laws Observed. River Garden is a beneficiary agency of the Jewish Federation of Jacksonville

11401 Old St. Augustine Road · Jacksonville, FL 32258 · 904-260-1818 · [www.rivergarden.org](http://www.rivergarden.org)



# SUPPORT OUR ADVERTISERS



*Celebrating the Life of a Community*



Computer consultants, training,  
networking and repair  
**WINDOWS & MAC**

(904)-254-9524

(904)-460-9569

[jmarx46@comcast.net](mailto:jmarx46@comcast.net)

**Joseph Marx**  
President

1955 A1A South  
PMB 131  
St. Augustine, FL 32080

**Foreign & Domestic**

**FELDMAN**  
**AUTO REPAIR**

Gary Feldman, Master Technician

3816 N. Ponce de Leon Blvd.  
St. Augustine, Florida 32084

**(904) 217-0865**



**Comprehensive MedPsych Systems**  
Psychological Services of St. Augustine

**Karen Selig, M.A.**  
Clinical Director

Licensed Marriage and Family Therapist, MT128

1100-1 S. Ponce de Leon Blvd.  
St. Augustine, FL 32084

(904) 824-7733 x2509 Fax (904) 829-9768

[kselig@medpsych.net](mailto:kselig@medpsych.net)

[www.medpsych.net](http://www.medpsych.net) \* [www.pssacare.com](http://www.pssacare.com)



**Stuart A. Soroka, M.D.**



**G.I. Associates**  
*of St. Augustine*

*Consultants in Digestive Disorders*

216 Southpark Circle East  
St. Augustine, FL 32086

Tel 904-824-6108

Fax 904-823-9613

[www.GI-Associates.com](http://www.GI-Associates.com)



Robert Black Furniture and Granite Repair

**Robert Black**  
Owner

Furniture Repair / Antique Restoration  
Granite Countertop Repair/ Restoration  
Over 25 years experience / Licensed

904 806 0450

[rblack@hellsouth.net](mailto:rblack@hellsouth.net)



*look, feel and live  
younger, longer  
with essential oils*

**dōTERRA**  
Wellness Advocate



[www.doterradiva.com](http://www.doterradiva.com)


Jeannie Rissman

904.219.9161 [tennis.life@yahoo.com](mailto:tennis.life@yahoo.com)

**CPTG** Certified Pure Therapeutic Grade®



# SUPPORT OUR ADVERTISERS



Nancy Cohen, RDN, LDN

Nutritionist, Holist Reiki Master,  
Reiki Master/Teacher, Universal  
Reiki Healer

[nal@feedingthebodyfeedingthesoul.com](mailto:nal@feedingthebodyfeedingthesoul.com)  
[www.feedingthebodyfeedingthesoul.com](http://www.feedingthebodyfeedingthesoul.com)


**Ammar**  
Beauty Supply Co.

PROFESSIONAL HAIR & NAIL SUPPLIES • SKINCARE •  
WIGS • HAIR EXTENSIONS • COSMETICS • ACCESSORIES •  
BARBER SUPPLIES • SALON EQUIPMENT • THEATRICAL MAKE-UP

223 W. King Street  
St. Augustine, FL 32084

904/829-6544  
Fax 904/829-3032

**BRUCE R. WITTEN, M.D., P.A.**  
OTOLARYNGOLOGY  
FACIAL PLASTIC SURGERY  
SLEEP APNEA  
SNORING  
**(904) 829-6441**  
301 Health Park Blvd., Suite 323, St. Augustine, Florida




Jan Felixson, L.C.S.W.  
Licensed Clinical Social Worker

Individual, Family, Couples Therapist  
2200 N. Ponce de Leon Blvd, Ste 3  
St. Augustine, FL 32084

T: 904-824-1152  
C: 904-501-8103  
SW2848  
MT584



**Johnny & Beanies**  
it's real food!

904-692-1800  
224 N. Main St., Hastings, FL  
catering services available  
friend us on facebook

FULLY INSURED  
35 YEARS EXPERIENCE

RESIDENTIAL  
COMMERCIAL



**K.D.'S WINDOW CLEANING  
& JANITORIAL CO.**  
**904-826-3490**

KEN DIAMOND  
REPRESENTATIVE

LIC.# 224000027458  
P.O. BOX 1275  
ST. AUGUSTINE, FL 32085-1275

**Ad Rates**

Size	Cost
Full Page (9x7.5)	\$430 / year
Half Page (7.5x5 or 9x3.5)	\$220 / year
1/4 Page (5x3.5 or 7.5x2)	\$115 / year
1/8 Page (3.5x2)	\$60 / year

Feel Flex and Flow Therapeutic Massage  
Revitalize Your Body and Awaken Your Senses...

Nationally Certified, Licensed and Registered  
Specializing in Reflexology and Myofascial Technique

443-480-5158

[feellexandflow.com](http://feellexandflow.com)

Lisa M. Mundy  
Massage Therapist  
[lismariemundy@yahoo.com](mailto:lismariemundy@yahoo.com)

