

# THE SHOFAR

of **TEMPLE BET YAM**

2055 Wildwood Drive  
P.O. Box 860098  
St. Augustine, FL 32086-1146  
904-819-1875



September 2015

Elul / Tishri 5775 - 5776

## HIGH HOLY DAYS SERVICE SCHEDULE

Selichot Shabbat: Friday, September 4th, 7:30 p.m.



Erev Rosh Hashanah: Sunday, September 13th, 7:30 p.m.

Rosh Hashanah Day: Monday, September 14th

9:00 a.m. Children's Service

10:00 a.m. Morning Service

Followed by Tashlich at Treaty Park

Kol Nidrei / Erev Yom Kippur: Tuesday, September 22nd, 7:30 p.m.

Yom Kippur Day: Wednesday, September 23rd

9:00 a.m. Children's Service

10:00 a.m. Morning Service

3:00 p.m. Afternoon Service

4:45 p.m. (approximately)

Yizkor

Neilah

Havdalah

Break-the-Fast



# The Shofar

Is published by Temple Bet Yam  
2055 Wildwood Drive, PO Box 860098  
St. Augustine, FL 32086-1146  
PHONE: (904) 819-1875  
EMAIL: [templebetyam@bellsouth.net](mailto:templebetyam@bellsouth.net)  
WEBSITE: [templebetyam.org](http://templebetyam.org)

Rabbi:	Fred Raskind
Rabbi Emeritus:	Mark Goldman
President:	Terri Kamm
Immediate Past President:	Bobbi Carman
Vice President:	[vacant]
Religious School Director:	Heather Naughton
Recording Secretary:	Marcia Rector
Treasurer:	Art Rogove
Financial Secretary:	Nancy Sorkin
Corresponding Secretary:	Ronnie Botnick
Committees:	
Life Long Learning:	Min & Elliot Stone
Constitution:	Ileine Hoffman
Membership:	Barbara Rogove
Newsletter:	Bev Darkatsh
Publicity:	Carol Gladstone
Religious School:	Denise Mensh
Ritual:	Chuck Meiselman
Ways&Means:	Shelly Cohen & Dinah McNamara
Sisterhood:	Jackie Witte
Men's Club:	Bernie Levy
Facilities:	Jeff Kamm
Social Justice:	Andi & Joe Marx

The Shofar is published quarterly, September, December, March, and June, unless otherwise announced. There are monthly Bulletins in the off-months. It is distributed free of charge to members and advertising sponsors. Advertising inquiries should be addressed to Jen Sherman.

Deadline for submissions is the 15<sup>th</sup> of the month which precedes the month of publication. Late material will be held for the following issue.

## Inside this month's shofar:

From the Desk of the Rabbi:	3-4
Israel Today	
Interfaith 450 <sup>th</sup> St. Augustine Commemoration	
From the President:	5
About the Celebratory Wall:	5
Ritual:	6
Religious School:	6
Introducing Director Heather Naughton	
Membership:	7
New Member Steve Rich	
Life Long Learning:	7
Ways and Means:	8-9
Putting Tournament	
Social Justice:	10
Shir-u L'Adonai:	10
Mitzvah Mob:	10
Facilities:	11
Kitchen	
Used Books	
Sisterhood:	12
Book Club	
Men's Club:	12
Poker Game	
Photo of Ice Cream Oneg	
Special Announcements, Events, and Other:	
Mazel Tov!	11
to Jane Seiden, Ellen Miller, & Jane Karp	
Oneg Plea:	11
Cemetery Option:	16
Pictures Needed for Scrapbook:	19
Child Care During Services:	19
Your Temple Family:	
High Holy Day Greetings:	13
Birthdays:	14
Anniversaries:	14
Healing Prayer:	15
Yahrzeits:	15
Contributions:	16-18
Contribution Form	
Trees for Israel	
Murray Weiss Memorial Fund	
Celebratory Wall Plaque Form	
Board Notes:	19
Editor's Notes:	19
September Dates to Remember:	20
Sponsors:	21-23

Shofar columnists and the entire TBY Board of Trustees would like to wish all of you a most happy, healthy, and peaceful New Year..

L'Shana Tovah!

## From the Desk of the Rabbi...

### **Rabbi Fred Raskind**



Toward the end of my vacation this summer in Maine, I sat by the lake in the cool, northern New England climate, and watched a magnificent setting sun. The sky glowed with beautiful

pink and blue and red hues.

I had time to consider the really important things in life, and how truly blessed I have been. Then my mind turned to thoughts of Temple, our growing congregation, and the wonderful community we live in. What would this year bring? What exciting events would we share? What disappointments and setbacks would some of us have to face?

These questions led me to wonder about the High Holy Days that begin just after Labor Day. It dawned on me that the questions and thoughts that surfaced on my vacation parallel the same issues of *Rosh Hashanah*, *Yom Kippor*, *Yizkor* and *Tashlich*: ultimate values and life renewals.

**Ultimate values:** On vacation, when we have time to relax and let down, to stop and meditate, we often may question what's really important in our life. Isn't that the whole point of the High Holy Days: to take stock and assess our "quality of life"? These *Yamim N'areem*, special sacred days, give us the opportunity to really look at how we're doing. Re-

member Ed Koch, the flamboyant Mayor of New York City? He used to ask everyone from reporters to the man in the street and the woman in the subway, this question: "How'm I doin'?" It's the same question we should be asking—and answering—for ourselves—during the Holy Days.

**Life renewals:** Vacations can be relaxing, refreshing, and restorative for us in many ways. But the common denominator is *change*: a change of scene, change in routine, new experiences, and "down-time" to recharge our inner energies and spirit. So too, with these Holy Days—BUT only if we take the time and commit to fully experience the services and celebrations. If we go on vacation and spend half the time calling the office, checking our e-mail, or working on the laptop computer, then the point of the vacation may be missed. Likewise, some may just pop into a service or two and neglect the necessary spiritual effort. They may have gone through the Holy Days, but wonder why the Holy Days did not go through them.

Like a vacation, our *Yamim N'areem* sacred days can offer the chance to raise for ourselves the truly key questions of life. They also can be a source of spiritual and emotional renewal—if we truly engage.

*L'shanah Tovah*—A good and sweet year,  
Fred Raskind, Rabbi

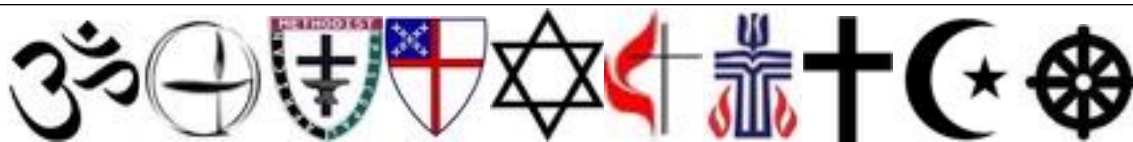
PS: If you or your children at college won't be with us for either or both of the holy days, be sure to request a courtesy seating letter from our office NOW to attend holiday services at another Reform congregation, as long as your current membership is in good standing.

*Rabbi Fred thought you'd like to know —: From **ISRAEL TODAY**: 6TH CENTURY CE FIND, 2ND OLDEST BIBLICAL SOURCE*

Thanks to a high-tech solution, a charred parchment scroll discovered by the shores of the Dead Sea bearing verses from the Book of Leviticus was deciphered for the first time, archaeologists announced Monday. The document, found during the excavation of the synagogue in Ein Gedi 45 years ago, was burned 1,500 years ago while stored inside the ark in the ancient house of worship. Since then, however, the text has been unreadable.

Using micro-CT scanners, specialists at the Israel Antiquities Authority's Dead Sea Scrolls laboratory in Jerusalem discerned the text written on the charred scroll: verses from the second chapter of the Book of Leviticus. Carbon-14 dating determined the text was from the end of the 6th century CE, making it the oldest copy of the Bible after the Dead Sea Scrolls. The IAA archaeologists noted that it was also the first time the remains of a Torah scroll were found in an ancient synagogue.

Mentioned in the Bible as an oasis where David took refuge from King Saul, Ein Gedi was home to a Jewish community in antiquity and, during Roman times, was noted for the balsam plantations growing nearby. Excavations in the 20th century unearthed the remains of the town and a synagogue with a large mosaic floor.



## ***Interfaith Commemoration of St Augustine's 450th Birthday***

Tuesday

September 1, 2015 at 6:30 pm

First United Methodist Church

118 King St., St. Augustine, FL



First United Methodist Church – The Center for Spiritual Living

Members of the Native American Community – Islamic Center

Temple Bet Yam - Unitarian Universalist Fellowship - Grace United Methodist Church

Saint Cyprian's Episcopal Church – the Buddhist community

First Coast Metropolitan Community Church – Chinmaya Mission,

San Sebastian Catholic Church -- members of St. Augustine Presbytery

**All are invited to attend this special commemoration of our city's 450<sup>th</sup> founding as we seek to work towards being one community.**

Directions to First United Methodist Church. From U.S. 1:

Turn on King Street heading toward downtown. Turn left at Riberia. Church is on the corner of Riberia and King Street.

Parking is limited. Parking available in city lots, at Post Office, side streets.

Call 904-825-3600 for further information.



## FROM THE PRESIDENT

*Terri Kamm*



As we approach Rosh Hashanah and Yom Kippur, I am reminded of all those who came before us. Apples and honey were eaten, a round loaf of challah was on the table, the same prayers were recited, Shofars were blown, and forgiveness asked and granted. Over the years, so much has changed, yet so much has remained the same. We are extremely lucky to be able to hold our traditions so dear and practice them so freely in our ever changing world.

Here at Temple Bet Yam much is the same, but you will also notice some changes this year. We have new High Holiday Prayer Books, which, while keeping the services of Rosh Hashanah and Yom Kippur the same, will include some new readings, songs, and prayers. Rabbi Fred and our beloved choir have been extremely busy preparing all summer. Our Shofar blowers have been practicing. Thanks to the generosity of several Temple members, our Bima will once again have gorgeous flowers on it.

We welcomed a new Religious School Director this year. Please join me in making Heather Naughton feel like one of the family. Introduce yourself to her, if you haven't already done so. She is excited about taking on the responsibility of overseeing the Jewish education of our children, and we are happy to have her.

You will also see some new faces in our congregation. Make sure you introduce yourselves to anyone you might not know. Many of our new congregants are already involved in different aspects of Temple life. If you are new and would like to become more involved, please let any of us know. There are plenty of things available to do!

I look forward to seeing you all at these special services. There is a reason they are called the Days of Awe. May we all be blessed with the love of family and good friends, peace, happiness and a sweet New Year!

## — CELEBRATORY WALL — SIMCHA...ANNIVERSARY... GRANDCHILD...SPECIAL BIRTHDAY

Have you recently walked back to see our Celebratory Wall?



Think about taking that short walk. Notice our fig tree, sit on the bench, take time to reflect, read the plaques on the wall.

We, at TBY, thankfully have so many occasions to celebrate. Think about celebrating a simcha in your family or honoring a TBY member by adding a plaque to the Celebratory Wall.



For additional information and order form please contact Phyllis Keiser.



☆☆☆☆☆☆☆☆

## NEWS FROM YOUR COMMITTEES

### RITUAL

**Chuck Meiselman**



There are so many opportunities for each and everyone to help. You don't have to read Hebrew to participate in our services.

What makes this Temple special is you. This Temple of ours is one big family. With that being said, please take the time to give it some thought and volunteer, or when approached to help out, say, "Why not?". Judaism is from our hearts and souls. Reach out to your fellow congregants — you will be glad you did.

### RELIGIOUS SCHOOL

**Heather Naughton Director**

**and Denise Mensh, Religious School Trustee**



Rosh Hashanah ushers in the new—a new Hebrew calendar year, new school year, and new beginnings. This newness also yields an element of sweetness, as we consider the apple dipped in honey, our children's stories about their first days of school, and the opportunities that only new beginnings can offer.

New beginnings for our Religious School began August 16<sup>th</sup> with our Open House for students and their parents, and our first day of Religious School was August 23<sup>rd</sup>. For some, this year will mark milestones such as a Bar and Bat Mitzvah, while others will be excited to start reading their first words in Hebrew. If you know of any families who would still like to join our Religious School, please let them know it's not too late. We are always welcoming new families.

This upcoming year we are excited to welcome a new teacher, Rebecca Roberts. Rebecca, or Becca as she is known to the students, is teaching the students in the Alef class. She is a senior at St. Augustine High School and is in her fourth year in the Teaching Academy. We look forward to all the energy and great ideas she can bring to our classroom.

We happily anticipate seeing all students and their families at our High Holiday Children's Services. Within this spirit of Rosh Hashanah, I am thrilled to begin as the new Religious School Director at Temple Bet Yam.

#### And about Heather Naughton...

Over these past few months I am proud and honored to say that I have been transitioning into the role of Religious School Director. I can't thank Joan Guglielmo enough for offering me the position. I will have very big shoes to fill, but with the help of the Rabbi, the parents, staff, and congregation members, I know we will have a smooth and successful transition.

As some of you may know, I am a proud St. Augustine native with ties to both Jewish congregations here in St. Augustine. I grew up attending the Congregation Sons of Israel and now as an adult I found my Jewish home here at Temple Bet Yam. Prior to moving back to St. Augustine, I was an active member of Temple Beth El in Ormond Beach where I was a religious school teacher for three years. These days I stay busy being aunt to Gabe, Mia, Zoe, and Wilder Naughton, teaching high school English at St. Augustine High School, and working toward my Masters.

As we move into this next school year, I look forward to rekindling old friendships and making new ones as I embark on this new chapter in my life.

## MEMBERSHIP

**Barbara Rogove**



We want to welcome our newest members, Steve Rich and Gary Bernstein. Please make sure to say hello to them at services and make them feel welcome. We are always looking forward to new members. We have been receiving a lot of publicity in the newspapers, but we also need your help in getting the word out about how wonderful it is to be a

member of Temple Bet Yam. Please contact me if you know of anyone who might be interested in joining our Temple family, or just wants information about us.- Please contact me if you know of anyone who might be interested in joining our Temple family, or just wants information about us.

## LIFE LONG LEARNING

**Min & Elliot Stone**



The Life Long Learning chairs Min and Elliot Stone, with committee member Judy Holmes, met with Rabbi Fred to discuss the topics for the Life Long Learning sessions for the

coming year. There are so many aspects of Judaism that can be studied that selecting a few topics of interest was difficult. For example, would you like to discuss the concept of "Right of Return"? How about the great women of the scripture? Kabala? Jewish artists? Food?

We are looking forward to spirited discussions in our sessions which will start on October 14, at 7:00p.m. The conversation will compare Orthodox, Conservative, and Reform Judaism.

### Introducing Steve Rich....



I'm a native of New York City and, after a stint in the Navy, received an undergraduate degree from Queens College (in, yes, Queens, New York) and law degrees from Fordham and Columbia Universities. I then left New York when I joined the Army. After various assignments, including some period of time not on active duty, I landed up being stationed in the Washington, D.C. area, where, after 30 years service, I retired from the Army in 2005.

After retiring from Uncle Sam, I practiced law in Washington for a few years and then took advantage of G.I. Bill benefits to go back to school. I earned an Associate's Degree in Applied Arts, majoring in music. I describe myself as a retired military officer and recovering lawyer. In the spirit of Shirley MacLaine, I consider those to be prior lives as I now call myself a musician.

My wife Lynn and I, along with our Labrador retriever Boone, became residents of World Golf Village last December after relocating from Alexandria, Virginia. True to my new calling, I am exploring musical opportunities in the area. My interests include folk music (I play guitar and banjo), classical music (I play bass in the St. Augustine Orchestra) and opera. I encourage everyone to support the performing arts.

Lynn and I, in addition to music, enjoy travel (especially cruises); French language, food, culture and (of course) wine.

## WAYS AND MEANS

*Shelly Cohen*

*and*

*Dinah McNamara*



As Ways and Means chairs, Shelly and I are planning events that will raise money for Temple Bet Yam. Each year the finance committee creates a budget for the next fiscal year and included in that budget is a Ways and Means amount that contributes to balancing the budget. Finance struggles with keeping dues “reasonable” and one way this is accomplished is by the Ways and Means events that run throughout the year. To successfully run events we need leadership, which is really just another way of saying we need members of Temple Bet Yam who are willing to volunteer some of their time to organize and run an event.

So have you ever thought about leadership? Or more specifically leadership at Temple Bet Yam? As Shelly and I started our roles as Ways & Means Co-Chairs, we certainly are concerned about finding leadership to help with all the events planned. However the Religious School Parents showed us that maybe we don’t have that much to worry about. It was wonderful how this particular group of adults answered the call to help. We were trying to once again have the Fun Bowling outing in August. I sent an email out to the list of parents, provided by our very helpful Financial Secretary, Nancy Sorkin. I had sent out the group email, using the “Blind Copy” method. That means no email addresses were revealed. I heard pretty quickly from a parent (thank you Lisa) that she didn’t see any names on the list and that she would do whatever she could, given her work schedule. Well I thought that was a good point, how could the parents know who was available for help if the emails weren’t disclosed. And I had forgotten to add an attachment, so I had a good excuse to resend. I did, but this time with the email addresses visible. All of a sudden the parents are emailing to “ALL”. And another parent, (Thank you Stuart), suggested a date. Another parent, (Thank you Denise), offered to call the Bowling lanes and pick up prizes. And then ANOTHER parent (Thank you Jen) offered to update the flyer. “Like a Boss” we had a Bowling event!!! Nope I am not worried about where the next leaders for Temple Bet Yam will be found. They are already being leaders.

Let me say that the Dynamic Duo, Andi Marx and Terre Wallach, have not finished with Ways & Means yet. The first ever **Temple Bet Yam Putting Tournament will be held October 25<sup>th</sup> at the World Golf Hall of Fame.**

We do have a *few* more opportunities available for leadership with the following upcoming events:

- ✓ **Welcome to Kutsher’s November 8<sup>th</sup> at 2:00 PM at TBY**
- ✓ **Brunch & Card Party January Date and Place To Be Determined**
- ✓ **Deli Night February 4<sup>th</sup> at TBY**
- ✓ **Kugel Kook-off March 12<sup>th</sup> at TBY**
- ✓ **Limelight Theatre and Silent Auction April 16th**

We invite you to Chair an event or grab a friend and Co-Chair an event. The Religious School Parents showed how this can work. Talk among yourselves. Shelly and I and previous chairs promise we will be with you every step of the way. I look forward to hearing from you!!



WAYS AND MEANS sponsored its third family bowling party on Sunday, August 2<sup>nd</sup>, at the Anastasia Lanes. It was a fun filled afternoon enjoyed by so many, young and not as young alike. There was laughter in the air.



**At The World Golf Hall of Fame  
Sunday, October 25, 2015, 3:00 to 6:00 pm**

**A putting tournament on the 18-hole putting course  
Access to the Museum and Challenge Hole  
An awards party for everyone  
with hors d'oeuvres and beverages**



# **FIRST ANNUAL TEMPLE BET YAM PUTTING TOURNAMENT**

**To Benefit The First Tee of North Florida and  
Temple Bet Yam Children's Programs**

**SPONSORED BY STUART SOROKA, M.D.**

**Adult Tickets: \$50  
Student Tickets: \$15**

**Contact:**

**Andi Marx at  
Terre Wallach**

**t**

## SOCIAL JUSTICE

*Andi & Joe Marx*



On Tuesday September 1, 2015, there will be an Interfaith Commemoration of St. Augustine's 450th Birthday. It will be at the

First United Methodist Church, 118 King Street. The time is 6:30 pm. Members of our choir will be participating. We hope many of you will attend.

Dining With Dignity is an ongoing program and gives us a chance to do something to help our neighbors in the community. We are happy that we are getting a wonderful response from everyone.

We will be having a food drive. Pick up an empty bag on Rosh Hashanah and bring it back filled with non-perishable foods on Yom Kippur.

## LOOKING TO DO A MITZVAH?

### Mitzvah Mob

*Ronnie Botnick*

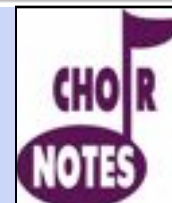


Just a reminder that the Mitzvah Mob is available to offer transportation or other assistance to any member in need.

Instead of paying someone for rides to the airport or medical appointments or requests for help in your home, let us offer our services. Do thank us with a donation to the temple. Call Ronnie Botnick to request or volunteer services.

## SHIR-U L'ADONAI

*Emily Brown*



As we come together to celebrate and observe these holiest of days, familiar songs call to us. Two of them, Aveinu Malkeinu and Kol Nidrei, are the most recognized songs heard during this time of year.

Aveinu Malkeinu literally means Our Father Our King. The song talks about our sins and asks God for compassion for us and our children. It asks for an end to war and oppression. It ends by asking God to inscribe us for blessings in the Book of Life and for the coming year.

Kol Nidrei is also the name of the Erev Yom Kippur service because of the haunting melody which is traditionally chanted or played three times. It means "All Vows" and is in Aramaic, the same language as Chatzi Kaddish and Mourner's Kaddish. The verses ask God to forgive us for our sins, to help us fulfill our vows, and to pardon us for any vows we do not fulfill in the coming year. The tune is instantly recognizable and incredibly moving to all who hear it.

As we prepare for the High Holy Days and the beautiful music we expect to hear from our Choir, we thank them for the wonderful Choir led service on August 21. A big thank you for the oneg provided by Sisterhood.

## FACILITIES

**Jeff Kamm**



It's been quite a busy time for our facilities group. The outside of our Temple has been fully manicured and the parking lot leveled and filled in. The Memorial Board has been rewired, insuring everything is in place for the upcoming holidays. The new computer is up and running in the office. Little things have been fixed, and in general, our Temple is in good shape. We had a very informative meeting and safety check with a representative from the St. Johns County Sheriff's Department. We are lucky to have such supportive law enforcement officers in our area. Thanks to everyone that helps out. Before long, it will be time to build our Sukkah, and we always need volunteers to help with this fun project.



If you are cleaning out your bookshelves at home, please **do not bring your unwanted books** to Temple Bet Yam. We do not have any space for them, and do not have any staff to dispose of them. Do consider donating them to Libraries, senior citizen homes, assisted living facilities and nursing homes. Thank you.

**Mazel Tov!**

**Look what we have done!**

A great big thank you to

ELLEN MILLER

and

JANE SEIDEN

who recently cleaned and reorganized the kitchen from head to toe.

and to

JANE KARP

who organized and neatened the library

Let us know of your accomplishments...

this is the spot to brag!

It's all in the family, and we're proud of each and every one of you!



### ONEGS

Reminder: Onegs are a responsibility of Temple membership, not just of Sisterhood. If you have not yet signed up for a date, please contact Bev Darkatsh.

Thanks.



## SISTERHOOD AND MEN'S CLUB ACTIVITIES

### SISTERHOOD

*Jackie Witte*



On August 7, Sisterhood led a beautiful Shabbat service. Afterward, Men's Club provided an ice cream and all-the-fixin's Oneg. We then provided the Oneg for a most wonderful Choir-led Shabbat service on August 21.

Our first meeting of the year will be held at Temple Bet Yam, Thursday, September 10, at 11:30 a.m. We will be discussing, brainstorming, and planning the activities and functions we want for Sisterhood in the coming year. Your input is most important. I'm looking forward to seeing you there! A light lunch, dessert, and drinks will be provided. -



### Book Club News

The first Sisterhood Book Club Meeting will be held at the Temple on Tuesday, October 13, at 7:15 p.m. Discussion of the novel, When the Doves Disappeared, by Sofi Oksanes, will be led by Cathy Kasriel.

When possible, the book club meetings will be on the second Tuesdays of the month.

**The Men's Club Ice Cream Social for the Sisterhood Shabbat**



*Photo courtesy of Henry Seiden*

### MEN'S CLUB

*Bernie Levy*



So far we've had a successful kickoff and planning meeting complete with great suggestions for activities, foreign food, and exotic travel.

The Men's Club then opened to rave reviews when we did the July Men's Club service. A special congratulations and thank you to Bud Carr who celebrated his 90<sup>th</sup> birthday that night and provided a delicious oneg.

That success was followed by a "sinfully delicious" ice cream social in support of the Sisterhood service on August 7.

On Thursday, August 27, we held the next TBY Men's Club meeting at the Temple and reviewed ideas suggested by our members. We also heard from our treasurer on the status of the club finances, enjoyed a special guest lecturer and had a bite to eat.

The Men's Club is always looking for suggestions for activities. If you have any special contacts or interests, contact Bernie Levy or Earl Brown.

Stay tuned; more information will follow....

If anyone is interested in joining the off-site poker club, please contact Sheldon Beasley. Though we have a full house, please let us know if you want to be placed on the waiting list or be advised of future games.







# OUR TEMPLE FAMILY



OUR VERY BEST WISHES TO YOU, YOUR FAMILY, AND FRIENDS  
FOR A BLESSED, PROSPEROUS, AND HAPPY 5776  
. L'SHANAH TOVAH TIKATEIVU... L'SHANA TOVA  
Rabbi Fred & Judy

WISHING YOU PEACE, HAPPINESS AND  
A SWEET NEW YEAR! L'SHANA TOVA!  
TERRI & JEFF KAMM

HAPPY, HEALTHY, AND PROSPEROUS NEW YEAR GREETINGS  
TO MY TBY FAMILY AND FRIENDS  
MAY 5776 BE A YEAR THAT BRINGS PEACE TO ALL PEOPLES  
Bev Darkatsh

WISHING EVERYONE IN OUR TEMPLE  
A HEALTHY AND PROSPEROUS YEAR.  
L'SHANAH TOVAH  
BARBARA STAFFORD & ROB ARMSTRONG

MAY THIS NEW YEAR BRING PEACE AND  
GOOD HEALTH TO ALL OUR FELLOW  
CONGREGANTS. L'SHANA TOVA  
MIMI & KAREN SELIG

*Health, Peace, & Love  
For The Coming Year  
Alice Kohn & Family*

L'SHANA TOVA TIKATEVU  
A HAPPY & HEALTHY NEW YEAR  
TO MY TBY FAMILY  
JACKIE WITTE

WE WISH TO EXTEND OUR  
CONGRATULATIONS TO MY PARENTS  
ON THEIR 70TH WEDDING ANNIVERSARY.  
JANE & PHILIP KARP

L'SHANA TOVA! GREETINGS FOR A SWEET NEW YEAR  
Your Temple Board of Directors

BEST WISHES TO OUR TBY FAMILY  
FOR HEALTH, HAPPINESS, AND  
PEACE IN THE NEW YEAR.  
NANCY & BOB SORKIN

L'Shanah Tovah to our Temple family.  
May we go forward this year  
in peace, health and happiness.  
Min & El Stone

ALL BEST WISHES  
FOR A HEALTHY NEW YEAR  
ELLEN & MYRON MENSCH

PEACE AND GOOD HEALTH  
TO YOU ALL  
PHYLLIS & LEON FEIRMAN

L'SHANA TOVA TO OUR TBY FAMILY  
MAY 5776 BRING GOOD HEALTH, HAPPINESS,  
AND PEACE.  
SHELLY & MARTY COHEN

WISHING MY TBY FAMILY A HEALTHY  
AND PROSPEROUS NEW YEAR!  
NOREEN DAVIS

BEST WISHES FOR A HAPPY, HEALTHY  
AND SWEET YEAR TO YOU ALL  
MARCIA RECTOR

BEST WISHES TO OUR NEW TEMPLE FAMILY  
FOR A HEALTHY, HAPPY, & SWEET  
YEAR. WITH JOY AND GRATITUDE

Arnie & Sandi Richmond,  
Jonathan Richmond & Lauren Cortese, Jonathan, &  
Sam Richmond

OUR BEST WISHES  
TO OUR WONDERFUL TEMPLE FAMILY  
AS WE ENTER ROSH HASHANAH.  
MAY YOU AND YOUR FAMILY  
HAVE A SWEET YEAR,  
A YEAR OF GOOD HEALTH AND FORTUNE  
AND MAY YOU HAVE THE KINDNESS  
OF THOSE YOU LOVE AND KNOW YOU.

PHYLLIS & PAUL GREENFIELD

*L'shanah Tovah Tikatevu*  
*To Our Temple Family*  
*Meri & Leo McCarthy*

WE WISH ALL OF OUR TEMPLE FAMILY  
A HEALTHY AND SWEET YEAR.



Andi & Joe Marx

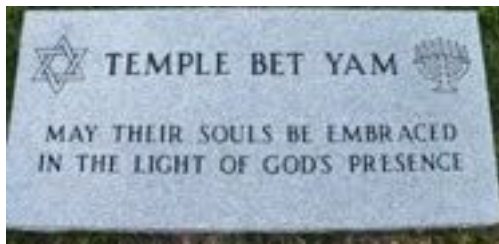
A VERY HAPPY, HEALTHY, AND PEACEFUL 5776  
TO OUR TEMPLE FAMILY. L'SHANA TOVAH!

PHYLLIS & MAURY KEISER

It is our custom at every Shabbat service  
to mention names of friends and loved ones  
who are in need of God's healing power.

OUR CONGREGATION UNITES IN PRAYING FOR REFUAH SHLEMA,  
A SPEEDY RECOVERY

Adonai, open my lips that my mouth may declare your praise.  
As those who came before us were blessed in the presence of the communities that sustained them,  
so we offer our blessings for those among us in need of healing.  
may each of those we pray for have comfort and relief in the healing of body and mind,  
and may each one return in time to health and wholeness and strength.



## TEMPLE BET YAM CEMETERY

Temple Bet Yam recently consecrated a portion of The Craig Memorial Park on Old Moultrie Road in St. Augustine as sacred burial ground in the philosophy and theology of Reform Judaism. This portion is dedicated to Temple Bet Yam, and all Temple members are eligible to purchase burial plots in the TBY section of the Memorial Park. Members may purchase burial plots for themselves, their spouses, their partners, their children, and/or their parents. Following Reform Jewish philosophy, there are no restrictions concerning burial of non-Jewish spouses or partners adjacent to their loved ones.

Those interested in purchasing burial plots as part of their preplanning should contact C. J. Kidd at Craig Memorial Park directly (904-824-1672). The current cost of a burial plot is \$1800 and includes perpetual care.

For further information or questions, contact Marty Cohen.



The custom of making offerings/donations as an expression of prayer traces back to Biblical times and has always been a practice of congregations. A donation can be defined as an act of prayer in which the participant extends himself or herself beyond the act of uttering words. It exceeds mere vocal expression and indicates that an act of personal sacrifice has been performed by the donor. The amount of an offering is less important than the deed. A small offering made by a person of limited income is as noble in nature as a larger one given by a person of wealth.

THE WORLD IS SUSTAINED BY THREE THINGS: BY TORAH, BY WORSHIP, AND BY TZEDAKAH.



## Trees for Israel

**Toby Weintraub**

We are enjoying huge success with our Trees for Israel. Every tree purchased is not only recognition of some significant event in your life

or in the life of someone close to you but is also a mitzvah for Israel and contributes to our Temple fundraising effort. Please use this very important program as a memorial to a friend or loved one or in celebration of a happy occasion for someone dear to you.



*Beineinu  
Congregants helping Congregants  
In the spirit of giving (tsdakah) the "MURRAY  
WEISS MEMORIAL FUND" has been actively  
helping those in need. Since its inception the  
fund has helped to finance the following:*

- \*Dental surgery*
- \*Tuition for two children's  
enrollment in a Jewish summer camp*
- \*Paid a past due mortgage payment*
- \*Helped finance medication for a  
cancer patient*
- \*Provided funds for a past due  
electric bill.*

*With the continuing contributions to this  
meaningful tzedakah fund by you, the  
congregants and the Murray Weiss  
foundation, it can continue to face the needs  
of those who require it.*

*Let us all be there for those who need the  
help and guidance for a healthier and more  
meaningful life.*

*Please contact me for any questions or  
information.*

*Please know that this program is held in the  
strictest confidence.*

*Shalom, Mimi Selig*





## CONTRIBUTION FORM

TEMPLE BET YAM  
P.O. BOX 860098  
ST. AUGUSTINE, FL 32086-1146

DONOR NAME: \_\_\_\_\_

ADDRESS: \_\_\_\_\_

CITY/STATE: \_\_\_\_\_

ZIP: \_\_\_\_\_ TEL. NO.: \_\_\_\_\_

IN HONOR OF: \_\_\_\_\_

\_\_\_\_\_  
\_\_\_\_\_  
\_\_\_\_\_

IN MEMORY OF, OR OTHER DESIGNATION:

\_\_\_\_\_  
\_\_\_\_\_  
\_\_\_\_\_  
\_\_\_\_\_

NAME & ADDRESS OF HONOREE OR FAMILY MEMBER IF NOT A MEMBER OF TEMPLE BET YAM:

\_\_\_\_\_  
\_\_\_\_\_  
\_\_\_\_\_

<u>DESIGNATION</u>	<u>AMOUNT (\$)</u>
GENERAL FUND	\$ _____
RELIGIOUS SCHOOL FUND	\$ _____
PRAYER BOOK FUND	\$ _____
SANCTUARY FUND	\$ _____
TORAH FUND	\$ _____
MURRAY WEISS MEM. FUND	\$ _____
HIGH HOLY DAYS CONTRIBUTION	\$ _____

\* RABBI DISCRETIONARY FUND \$ \_\_\_\_\_

TOTAL CONTRIBUTION: \$ \_\_\_\_\_



Please note that there are separate forms available in the Temple office for plaques for both the Memorial Board in the sanctuary and for the Celebratory Wall in the garden. Do NOT use the attached Contribution form for this purpose.



\* PLEASE NOTE: A SEPARATE CHECK IS REQUIRED FOR THE RABBI DISCRETIONARY FUND.

PLEASE MAKE PAYABLE TO TBX, WITH NAME OF FUND ON MEMO LINE.. THANK YOU.



Do you have a simcha you want to commemorate?



*Birth of a grandchild or child?  
Wedding? Anniversary?  
Milestone Birthday? Bar/Bat Mitzvah?*

Now you or your family can purchase  
a plaque to celebrate life's big moments.



*sample of an  
actual plaque!*

*Available 10" x 16"*

Express your joy in four lines of type for \$480  
which includes the plaque, engraving and installation in  
TBYF's commemorative garden wall.



For more information and forms, please  
contact the TBYF office at 904-544-1575 or  
email [templebeyan@bellsouth.net](mailto:templebeyan@bellsouth.net)



**PLEASE NOTE:**

**Forms for ordering the new Celebratory Wall  
plaques are available in the Temple office.**



## Board Notes

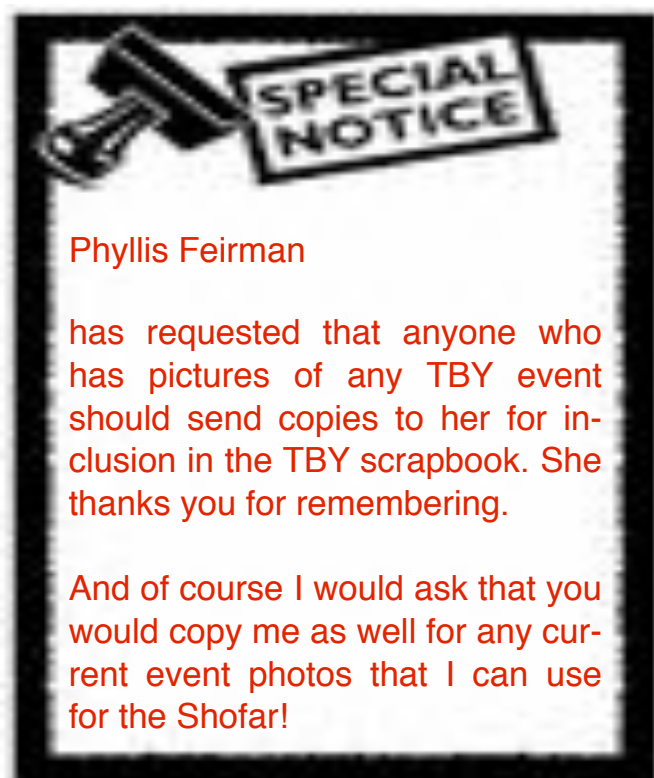
### *Reminder:*

Any member of the congregation who desires to do so may attend Board meetings as an observer. Meetings are held the first Tuesday of each month, beginning at 6:30 p.m. Anyone who wants a copy of the minutes should contact Marcia Rector.

Note that Child Care is now offered during regular Shabbat services unless otherwise announced.

There is no additional cost to parents. Please see Lisa Black for additional information.

We look forward to seeing all of you at our Shabbat services.



## EDITOR'S NOTES

### *Bev Darkatsh*



I owe a big debt of gratitude to the sharp eyes and grammatical acumen of my two copy-editor elves, Nancy Sorkin and Jackie Witte and to my new Mail Maven, Shelly Cohen.



We'd like to thank you for making the decision to take the Shofar on line instead of being mailed a print version. It's one of the privileges of membership to receive it this way and also part of the process of the Temple going green -- better for ecology, saves trees and energy. It's also better for the Temple in that it saves us the cost of paper and postage. You can still print it out yourself if you'd prefer to read it that way -- I do.

In order to become self-supporting, the *Shofar* is in need of additional advertisers. Please submit the names of the businesses you frequent and the professionals you use so that we can contact them as potential advertisers. You do not have to contact them personally; our *Shofar* advertising lady, Jen Sherman, will do it. All referrals will remain anonymous. Please contact Jen.



## *September, 2015 Dates to Remember:*

**Tuesday, September 1**

6:30. p.m. (off site)

Interfaith Service for SA 450<sup>th</sup>  
Anniversary

**Wednesday, September 2**

6:30 - 8:00 p.m. Board Meeting

**Friday, September 4**

7:30 p.m. Shabbat and Selichot Service

**Sunday, September 6**

**NO RELIGIOUS SCHOOL**

**Monday, September 7**

**LABOR DAY — TEMPLE CLOSED**

7:00 - 8:30 p.m. Choir Practice

**Tuesday, September 8**

**ST. AUGUSTINE 450<sup>th</sup> ANNIVERSARY**

**Thursday, September 10**

11:30 a.m. - 1:30 p.m. Sisterhood Meeting

**Sunday, September 13**

**NO RELIGIOUS SCHOOL**

7:30 p.m. Erev Rosh Hashanah Service

**Monday, September 14**

9:00 a.m. Rosh Hashanah Children's Service

10:00 a.m. Rosh Hashanah Service

1:00 p.m. (approximately) Tashlich

**Sunday, September 20**

**NO RELIGIOUS SCHOOL**

**Monday, September 21**

7:00 - 8:30 p.m. Choir Practice

**Tuesday, September 22**

7:30 p.m. Erev Yom Kippur Kol Nidre Service

**Wednesday, September 23**

9:00 a.m. Yom Kippur Children's Service

10:00 a.m. Yom Kippur Service

3:00 p.m. Afternoon Service

6:15 p.m. (approximately) Yizkor / Break-the-Fast

**Friday, September 25**

**Build the Sukkah**

**Sunday, September 27**

9:00 a.m. - 12:00 p.m. Religious School

Lunch in Sukkah for Religious School

**Monday, September 28**

9-11 a.m. Executive Committee Meeting

7:00 - 8:30 p.m. Choir Practice

**Tuesday, September 29**

7:00 p.m. Sushi & Sake in the Sukkah





# SUPPORT OUR ADVERTISERS

## RIVER GARDEN IS *OUR* COMMUNITY AGENCY

SEVEN-TIME RECIPIENT OF THE PRESTIGIOUS  
**GOVERNOR'S GOLD SEAL AWARD**  
FOR EXCELLENCE IN LONG-TERM CARE



AGENCY FOR HEALTH CARE ADMINISTRATION  
**A 5-STAR RATED COMMUNITY**  
CENTERS FOR MEDICARE and MEDICAID SERVICES



Personalized Care With Exceptional Results

904-886-8454

[rivergarden.org/rehab](http://rivergarden.org/rehab)

Rehabilitation



Peace of Mind in a Supportive Environment

904-288-7858

[rivergarden.org/adultday](http://rivergarden.org/adultday)

Adult Day Care



Elegant Retirement Living for Active Seniors

904-292-2683

[rivergarden.org/coves](http://rivergarden.org/coves)

Independent Living



Enabling Clients to Remain In Their Homes

904-288-7851

[rivergarden.org/homehealth](http://rivergarden.org/homehealth)

Home Health Care



## RIVERGARDEN | SENIOR SERVICES

Rehabilitation | Adult Day Care | Home Health Care | Long-Term Care | Memory Care | Independent Living

Jewish Dietary Laws Observed. River Garden is a beneficiary agency of the Jewish Federation of Jacksonville

11401 Old St. Augustine Road · Jacksonville, FL 32258 · 904-260-1818 · [www.rivergarden.org](http://www.rivergarden.org)

# SUPPORT OUR ADVERTISERS



Computer consultations, training,  
networking and repair  
**WINDOWS & MAC**

(904) 254-9524

(904) 460-9569

[jmarx45@comcast.net](mailto:jmarx45@comcast.net)

**Joseph Marx**  
President

1955 A1A South  
PMB 131  
St. Augustine, FL 32080

**Foreign & Domestic**

**FELDMAN**  
**AUTO REPAIR**

Gary Feldman, Master Technician

3816 N. Ponce de Leon Blvd.  
St. Augustine, Florida 32084

**(904) 217-0865**



Comprehensive MedPsych Systems  
Psychological Services of St. Augustine

**Karen Selig, M.A.**

Clinical Director

Licensed Marriage and Family Therapist, MT128

1100-1 S. Ponce de Leon Blvd.

St. Augustine, FL 32084

(904) 824-7733 x2509 Fax (904) 829-9768

[kselig@medpsych.net](mailto:kselig@medpsych.net)

[www.medpsych.net](http://www.medpsych.net) \* [www.psicare.com](http://www.psicare.com)



*Stuart A. Soroka, M.D.*



**G.I. Associates**  
*of St. Augustine*

*Consultants in Digestive Disorders*

216 Southpark Circle East  
St. Augustine, FL 32086

Tel 904-824-6108

Fax 904-823-9513

[www.GI-Associates.com](http://www.GI-Associates.com)



Robert Black Furniture and Granite Repair

**Robert Black**  
Owner

Furniture Repair / Antique Restoration  
Granite Countertop Repairs/ Restoration  
Over 25 years experience / Licensed

904 806 0430

[rblack@bellsouth.net](mailto:rblack@bellsouth.net)



*look, feel and live  
younger, longer  
with essential oils*

**dōTERRA**

Wellness Advocate



[www.doterradiva.com](http://www.doterradiva.com)

Jeannie Rissman

904.219.9161 [tennis.life@yahoo.com](mailto:tennis.life@yahoo.com)

**CPTG** Certified Pure Therapeutic Grade



# SUPPORT OUR ADVERTISERS

## Premium Advertising Space

Still available in the Temple Bet Yarn Shofar  
Ideal location: corner lot (approx. 2" x 3.5")  
near local businesses.

Our rates are reasonable and we will adapt the  
presentation to suit your specifications.

Please contact Jen Sherman: (904) 826-7640 or  
NYLUCA2000@yahoo.com

## Ammar Beauty Supply Co.

PROFESSIONAL HAIR & NAIL SUPPLIES • SKINCARE •  
WIGS • HAIR EXTENSIONS • COSMETICS • ACCESSORIES •  
BARBER SUPPLIES • SALON EQUIPMENT • THEATRICAL MAKE-UP

223 W. King Street  
St. Augustine, FL 32084

904/829-6544  
Fax 904/829-3032

## BRUCE R. WITTEN, M.D., P.A.

OTOLARYNGOLOGY  
FACIAL PLASTIC SURGERY  
SLEEP APNEA  
SNORING  
(904) 829-6441

301 Health Park Blvd., Suite 323, St. Augustine, Florida



FULLY INSURED  
35 YEARS EXPERIENCE

RESIDENTIAL  
COMMERCIAL



## K.D.'S WINDOW CLEANING & JANITORIAL CO.

904-826-3490

KEN DIAMOND  
REPRESENTATIVE

LIC.# 224000027458  
P.O. BOX 1275  
ST. AUGUSTINE, FL 32085-1275

## Johnny & Beanie's

it's real food!

904-692-1800

224 N. Main St., Hastings, FL

catering services available  
friend us on facebook



Jan Felixson, L.C.S.W.  
Licensed Clinical Social Worker

Individual, Family, Couples Therapist  
2200 N. Ponce de Leon Blvd, Ste 3  
St. Augustine, FL 32084

T: 904-824-1152  
C: 904-501-8103  
SW2848  
MT584

## Ad Rates

Size

Cost

Full Page (9x7.5) \$430/year

Half Page (7.5x5 or 9x3.5) \$220/yr

1/4 Page (5x3.5 or 7.5x2) \$115/yr

1/8 Page (3.5x2) \$60/year

## Feel Flex and Flow Therapeutic Massage

Revitalize Your Body and Awaken Your Senses...

Nationally Certified, Licensed and Registered  
Specializing in Reflexology and Myofascial Technique

443 480-5158

feellexandflow.com

Lisa M. Mundy

Massage Therapist

lisamariamundy@yahoo.com

