

# THE SHOFAR

of **TEMPLE BET YAM**

2055 Wildwood Drive  
P.O. Box 860098  
St. Augustine, FL 32086  
904-819-1875



March 2016

Tevet / Shevat 5776



Congregational

Passover Seder

Friday, April 22

Watch for an E-Blast for details

Upcoming Spring events -- Mark your calendars!

Kugel Cook-Off Saturday, March 12

Sisterhood Fashion Show Tuesday, March 24

Men's Club Open Mic Night Tuesday, April 2

Limelight/Silent Auction Saturday, April 16

Men's Club Holocaust Museum Thursday, April 21

Holocaust Cantata Wednesday, May 4

# The Shofar

Is published by Temple Bet Yam  
 2055 Wildwood Drive, PO Box 860098  
 St. Augustine, FL 32086-1146  
 PHONE: (904) 819-1875  
 EMAIL: [templebetyam@bellsouth.net](mailto:templebetyam@bellsouth.net)  
 WEBSITE: [templebetyam.org](http://templebetyam.org)

Rabbi:	Fred Raskind
Rabbi Emeritus:	Mark Goldman
President:	Terri Kamm
Immediate Past President:	Bobbi Carman
Vice President:	Denise Mensh
Religious School Director:	Heather Naughton
Recording Secretary:	Marcia Rector
Treasurer:	Art Rogove
Financial Secretary:	Nancy Sorkin
Corresponding Secretary:	Ronnie Botnick
Committees:	
Life Long Learning:	Min & Elliot Stone
Constitution:	Ileine Hoffman
Membership:	Barbara Rogove
Newsletter:	Bev Darkatsh
Publicity:	Carol Gladstone
Religious School:	Jen Sherman
Ritual:	Chuck Meiselman
Ways&Means:	Shelly Cohen & Dinah McNamara
Sisterhood:	Jackie Witte
Men's Club:	Bernie Levy
Facilities:	Jeff Kamm
Social Justice:	Andi & Joe Marx

The Shofar is published quarterly, September, December, March, and June, unless otherwise announced. There are monthly Bulletins in the off-months. It is distributed free of charge to members and advertising sponsors. Advertising inquiries should be addressed to Jen Sherman.

Deadline for submissions is the 15<sup>th</sup> of the month which precedes the month of publication. Late material will be held for the following issue.

## Inside this month's Shofar:

From the Desk of the Rabbi:	3
From the President:	4
Introducing our new Office Administrator:	4
Board Notes:	4
Religious School:	5
Ritual:	4
Life Long Learning:	5
Membership:	6
New members	
Isabel Sherman	
Sharon Schlegel	
Social Justice:	7
Mitzvah Mob:	7
Seder Announcement:	7
Ways and Means:	8-9
Kugel Chefs	
Shir-u L' Adonai:	8
Sisterhood:	10-11
Book Club	
Fashion Show	
Men's Club:	10-13
Poker Game	
Open Mic Talent Show	
Photos of Men's Club Manatees & Pancakes	
Your Temple Family:	14-15
Birthdays	
Anniversaries	
Healing Prayer	
Yahrzeits	
Contributions:	15-18
Contribution Form	
Trees for Israel	
Murray Weiss Memorial Fund	
Celebratory Wall Plaque Form	
Special Announcements, Events, and Other:	
Oneg Plea:	5
Cemetery Option:	14
Child Care During Services:	18
Editor's Notes:	18
Spring Dates to Remember:	19
Sponsors:	20-23

**Rabbi Fred Raskind****'THREE LESSONS FOR PURIM'**

*Megillat Esther*, the Purim story from the book of Esther, is one of the world's first novellas (short novels). It is at the same time gripping, funny, and significant. The message of Purim is really a way of reading all Jewish history, one relevant even today.

1. Purim teaches the importance of treating women equally to men. Note that without Esther's calm, her intelligence, and her articulate and dramatic words, those Jews would not have survived. It is remarkable that in a world of patriarchal domination, this book about our people's rescue coming from a woman has remained such a favorite among Jews everywhere. Esther's example is one that empowers women to become Jewish heroes, to realize that gender is not a limitation or a destiny. Esther liberates both men and women to be who they really are and to take responsibility for their actions, their people, and the world around us.

2. A second lesson from the *Megilah* is that we Jews have to fight for our own defense. Evil people - the spiritual heirs of Haman - scapegoat Jews in every age, blaming us for inflation, communism, capitalism, war, peace, or anything else they oppose. Alone among the nations of the world, Israel is the only country whose enemies want to destroy it entirely, just as Haman tried ages ago. Irrational and obsessive anti-Semitism is as true now as in the days of Haman, and what brought Haman down was the resolve of Jews to stand up for themselves and to assert their own interests publicly and without apology. We, too, must recognize what our own interests are and must be ready to work for that.

3. King Ahasuerus shows us that for evil to triumph, the only thing good people have to do is nothing. The king was not a wicked man, not a fervent anti-Semite. But he allowed Haman to manipulate him and the results were devastating. The two-part lesson here is that we must establish permanent dialogue with other peoples about the truth of Jewish life so that the Hamans of the world will not have an audience. Additionally, we must oppose any hatred, persecution, or discrimination.

These three lessons of Purim are just as real today: the equality of men and women, the need to oppose anti-Semitism and to support Jewish interests, and to reach out to all humanity to combat hatred.

— CELEBRATORY WALL —  
SIMCHA...ANNIVERSARY...  
GRANDCHILD...SPECIAL BIRTHDAY



Have you recently walked back to see our Celebratory Wall? Think about taking that short walk. Notice our fig tree, sit on the bench, take time to reflect, read the plaques on the wall.

We, at TBY, thankfully have so many occasions to celebrate. Think about celebrating a simcha in your family or honoring a TBY member by adding a plaque to the Celebratory Wall.



For additional information and order form please contact Phyllis Keiser.





## FROM THE PRESIDENT

*Terri Kamm*



It is hard to believe that we are two months into 2016 already! Hopefully our winter, such as it is in sunny Florida, is coming to an end. We can look forward to spring with its new life — blooming flowers; gardens; the cries of baby birds; and bright green, growth on our trees. I always used Tu B'Shevat,

(we called it the birthday of the trees) as a way to look forward to the growth in our lives during the year, as well as a reminder that nature is something to be admired and nurtured. If you are at all able, take a walk, a drive, or just sit and take in the sights and sounds around you when you are out doors. It is a remarkable experience if we truly look and listen. I wish for all of you a wonderful spring filled with beautiful colors and living things, either in your yards, planted in pots, or just in your minds when you close your eyes.

On a different note, as most of you know, I have been dealing with ongoing health issues since last fall. I have always known that our Temple family surrounds each other with loving arms during times of need, but I am completely amazed at the depth of this love. I can never begin to express my gratitude to each of you for the care and concern shown to me during this obviously stressful time.

Our Board of Directors made sure our Temple continued to run smoothly. Denise Mensh, Bobbi Carman, Elliot Stone, Phyllis Keiser, and Art Rogove stepped up to make sure anything that would have been required of me was handled so I could concentrate on healing. I am forever grateful for this and cannot thank them enough.

Our Temple is a wonderful example of the saying “joy shared is doubled and sorrow shared is halved”. We are truly blessed to be part of such a loving, caring, and supportive extended family.

### Board Notes

#### **Reminder:**

Any member of the congregation who desires to do so may attend Board meetings as an observer. Meetings are held the first Tuesday of each month, beginning at 6:30 p.m. Anyone who wants a copy of the minutes should contact Marcia Rector. t



We are pleased to announce that Angelina DeVincenzo is now employed as our new part-time Office Administrator.

Angelina is a student at Flagler College, pursuing her degree in Religion and Journalism, with a Youth Ministry minor.

Her normal office hours will be:

- Mondays: from 2 -6 p.m.
- Wednesdays: 2 - 7 p.m.
- Fridays: 3:30- 5 p.m.

Since she doesn't know most of us yet, please call the office to let her know in advance if you are planning to come to the building. If she does not answer the phone, please leave her a message. This, of course, is for her security as well as that the security of the building.

Please welcome Angelina to our TBY family.

## RELIGIOUS SCHOOL

**Heather Naughton Director  
and Jen Sherman, Representative to the Board**



Over the last few months the Religious School has been busy celebrating Chanukah and Tu B'Shevat.

In December we had a family Chanukah celebration with over 40 people in attendance. Each class sang a song, we told the story of Chanukah, read Chanukah Mad-Libs, and then concluded with latkes and other delicious goodies. Our Gimel students learned how to make latkes from scratch and it was a huge success.

In January we celebrated Tu B'Shevat with an ice-cream seder. Parents and students alike enjoyed four different ice-cream flavors and various toppings which represented the four seasons.

We also introduced our children's siddur, which the students will now use every Sunday for *teflia*. Students will now be able to read the prayers, in both English and Hebrew, so that we can start working on proper pronunciation for prayers.

As we move into spring, we will be getting ready for Purim and celebrating with a Purim carnival, celebrating the Fuhmann's B'nai Mitzvah, upcoming B'nai Mitzvah of the Soroka twins, and continuing to learn the stories and lessons of the Torah through our weekly parsha storytime.

## RITUAL

**Chuck Meiselman**



I want to thank everyone involved for helping to keep the duties of the Ritual Committee flowing flawlessly during the last several months while I have been healing. A hearty Mazel Tov to our B'nai Mitzvah, Rivkah and Aaron Fuhmann and to Lily and Adam

Soroka.

## LIFE LONG LEARNING

**Min & Elliot Stone**



Life Long Learning will meet again on April 14<sup>th</sup> at 7 p.m. Rabbi Fred with Marty Cohen will lead this event.

Our topic is Trouble in the Tribe.

This is an examination of the changing attitudes of American Jews toward Israel. The discussion will focus on the differences of thoughts and views between older vs. younger Jews, Orthodox vs. non-Orthodox traditions, and Democratic vs. Republican platforms.

Please mark your calendar for an interesting evening.

## ONEGS

**Reminder: Onegs are a responsibility of Temple membership, not just of Sisterhood.  
If you have not yet signed up for a date, please contact Bev Darkatsh.**

**We still need volunteers for March 18 and the two Friday services in June. Thanks.**

## MEMBERSHIP

*Barbara Rogove*



We want to welcome our newest members, Isabel Sherman, Melinda & Alexander Toro, and Sharon Schlegel. Please make sure to say hello to them at services and make them feel welcome. We are always looking forward to new members. We have been receiving a lot of publicity in the newspapers, but we also need your help in getting the word out about how wonderful it is to be a member of Temple Bet Yam. Please contact me if you know of anyone who might be interested in joining our Temple family, or just wants information about us.



### Introducing Isabel Sherman....

I was lucky enough to grow up in a basically Jewish neighborhood which solidified my love of Judaism. One of my earliest loves was drawing and painting. After receiving a scholarship to Philadelphia College of Art, I tried different majors until I settled on painting. Graduate school arrived and I spent a semester at NYU. I went to the University of Pennsylvania where I had a double major, fine arts and education, and graduated with a Masters in Education. I taught in the inner city Philadelphia school district for three years until my son David was born. We spent three years living on the same street where I grew up. When I became pregnant with my daughter, we looked for a larger home in New Jersey where my husband grew up. We found a lovely new home in Mt. Laurel where I raised my children. When my marriage ended, I went back to teaching. In Mt Holly, I taught grades 1 through 4 which was a temporary position. I spent the rest of my teaching career teaching grades 5 through 9, most of the time in middle school in Pennsauken, New Jersey.

I was so happy to retire because now I could paint full time and when I wasn't painting I could travel wherever I wanted. Traveling to new and interesting places inspired most of my recent paintings. I was active in my synagogue, Adath Emanu-El, in sisterhood and the social action committee. I am a life member of Hadassah. I am looking forward to becoming involved in Temple Bet Yam .

I just moved to St Augustine in the middle of November and am still getting settled. It is a slow process. Having David, Jen, and Max here in town brings joy to my heart and will ease my transition into life in Florida.

### Introducing Sharon Schlegel....

I always thought of myself as "a Philly kid" being a proud Philadelphian all my life 'til moving to St. Augustine with husband Ralph last August. Our first date was at a Phillies double-header and we're still Phils' fans who love baseball. We moved after losing most of our families and friends in recent years, and realizing snow isn't fun anymore. After two years in D.C. we made our home in Bucks County for the next 46 years. Since '68 I wrote for *The Times of Trenton* newspaper across the Delaware, doing feature stories and loving it. I interviewed varied members of the community, including many resident Holocaust survivors, as well as Princeton professors, and even Elie Weisel, who spoke at a local shul. So-called "ordinary people" struggling with the challenges of life taught me the most, and were more interesting than celebs I spoke to (which included Hillary Clinton in 1992, Mary Kay, Joyce Carol Oates, Sonny Bono and more). Covering the Women's Rights Movement in the '70s I talked to Bella Abzug and Alice Paul, original drafter of the ERA. I was also the fashion writer, covering the New York Designer Fashion shows and Men's Designer Shows twice each year. I saw Ralph Lauren (actually Lifshitz, but NOT interested in being a nice Jewish boy) introduce himself to the press during lunch because he couldn't afford a full-fledged show. I later interviewed him one-to-one, as well as designers Bill Blass, Diane von Furstenburg and such. For the past 25 years I wrote a weekly personal column for the paper and was warmly embraced by the community, which I miss. Ralph is an illustrator who's done covers for *U.S. News* and drawings for *The New York Times*, *Newsweek* and *Reader's Digest*. He became editorial cartoonist for *The Times of Trenton* (but drew Christie too thin I thought!). He is a non-practicing Lutheran who lights Chanukah candles with me. We have one daughter Vickie, who teaches English in Mexico (alas!), and an adored Maltipoo Teddy.



## Passover 2016



On Friday evening, April 22, we will celebrate Passover, as is our TBY tradition, with our Congregational Seder. We all very much appreciate the wonderful times we have had over the years and again look forward to a fantastic event.

Rabbi Raskind will lead us through the Hagaddah and we will again be treated to a fine meal made especially for us by Patrick and his Gypsy Cab crew.

Look for an eblast with specific information and the reservation form. Please follow the instructions on the form.

Plan to join in and help make this year's Seder a fun and meaningful event .

Phyllis Keiser  
2016 Seder chairperson

## SOCIAL JUSTICE

*Andi & Joe Marx*



The Social Justice Committee organizes the volunteers we need for Dining With Dignity. We feed the homeless in partnership with St. Pauls AME Church on the 3rd Monday of each month from 5 to 7 p.m. If this is a project you would like to get involved in, please contact Andi or Joe Marx and we will put you on the schedule.



Instead of a once-a-year food drive during the High Holidays, the Social Justice Committee is now collecting non-perishable food donations throughout the year. We have several plastic bins in the lobby alcove across from the office. When you are doing your shopping, pick up an extra item or two or split your BOGOs with us. We will deliver the items to St. Francis House on a regular basis. If anyone would like to volunteer as the monitor/delivery person, please let Andi or me know. Thanks to all who have contributed so far.

## LOOKING TO DO A MITZVAH?

### Mitzvah Mob

*Ronnie Botnick*



**An important reminder and request - We continue to need volunteers- for the occasions when one of our members needs some kind of assistance - usually in the form of a ride but occasionally for other services as well.**

The mitzvahs we do as we offer help to each other in times of need are a vital part of who we are as people, Jews, and members of TBY. If you need our services please don't hesitate to call. A small (or large) donation to TBY is all we ask as a thank you. Please, if you haven't already done so, join the many congregation members who have so generously offered their time as we continue to need your assistance.

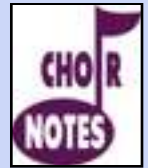
Please contact Ronnie Botnick if you can offer your help. Thank you.





## SHIR-U L'ADONAI

*Emily Brown*



As you've no doubt heard, we've been working on some new renditions of some of the prayers we do at our bi-monthly services. Stay tuned for more new music! We are also thrilled

to welcome Gary Bernstein to our choir family! The choir wishes a r'fuah shlema to Jane Seiden and Ruth Feldheim and a welcome back to Chuck Meiselman.

## WAYS AND MEANS

*Shelly Cohen*

*and*

*Dinah McNamara*



Jen Sherman is coordinating our first ever Kugel Cook-off, scheduled for March 12<sup>th</sup>, 5-8 p.m. As part of the festivities a Hard Lox Café is available for your eating pleasure. Dinah and Shelly hope that they are not the only ones competing with a kugel! Looks to be a fun evening, so plan on joining us.



We also want to mention that our Limelight Night with Silent Auction is scheduled for April 16<sup>th</sup>. The play, **The 39 Steps**, a mystery/whodunit, is described as:

*“A mix of a Hitchcock masterpiece with a juicy spy novel, and add a dash of Monty Python — this whodunit will keep you on your toes and roaring in your seat!*

*PG-13.”*

We will be asking all to donate items for the Auction. Are you someone who prefers not to solicit items from companies? Why not purchase something that can be auctioned and donate it. This is also one of our biggest fundraising events. Everyone's support is needed.

A big thank you to all who helped with Deli Night 2016. Your help was most appreciated.



---

Join us for the  
1st Annual  
**KUGEL COOK-OFF**  
  
at Temple Bet Yam on  
**March 12th from 5pm to 8pm**

Ticket prices are \$18 for adults,  
\$8 for kids 13 and under and kids 4 and under are free!

Ticket price includes a Hard Lox Cafe spread and 6 sampling tickets  
for the Kugel Cook-Off. Additional sampling tickets are available for 4 for \$1.

Sample the kugels made by Temple members and vote for the best one!  
Prizes will be awarded!

## SISTERHOOD AND MEN'S CLUB ACTIVITIES

### SISTERHOOD

*Jackie Witte*



Sisterhood has had a few busy months. In December, a well-attended and successful Chanukah luncheon was enjoyed at Gypsy Cab. Thank you notes were received from the

Children's Home Society/Healthy Families group in appreciation of our donations. In both January and February, Nancy Cohen, nutritionist and wellness expert, discussed with us topics women should look at for 2016. Under the guidance of Patty Savage, the Judaica Shop is continuing to sell remaining items. We voted to change and amend Sisterhood by-laws regarding attendance at meetings, the Onegs, and the Judaica Shop. Thanks go to Ileine Hoffman, Phyllis Greenfield, and all the ladies who contributed their thoughts and ideas.

Upcoming is Sisterhood's annual **Luncheon and Fashion Show** to be held at Hammock Dunes Club, Palm Coast, on Thursday, **March 24**. It will be an event you won't want to miss! Please use the form included in this Shofar or the one found in the Temple lobby for reservations and meal choice.

Our next meeting will be held May 10<sup>th</sup>, 1 p.m., at

### Book Club News

March 15<sup>th</sup>: *The Nightingale*, by Kristin Hannah; led by Sandi Richmond and Terre Wallace.

April 12<sup>th</sup>: *Silent Sister*, by Diane Chamberlain; led by Patty Savage and co-host to be announced.

**NOTE DATE CHANGE!**

May 17<sup>th</sup>: *The Secret Chord*, by Geraldine Brooks, led by Phyllis Keiser and co-host to be announced.

**FURTHER NOTE: VOLUNTEERS ARE NEEDED TO HELP WITH BOOK CLUB PRESENTATIONS!**



### MEN'S CLUB

*Bernie Levy*



The TBY Men's Club strives to sponsor events that allow the men (and sometimes the women) of TBY to get together. Sometimes it's for a learning experience. Sometimes it's a social experience. Some-

times it's an event to give back to others in the Temple. Sometimes it's an adventure.

Realizing that we have a diverse group of members, we try to offer a range of activities.

#### **Here's what we've done so far this year:**

Lecture and discussion on Alzheimer's and dementia by Dr David Goldberg

Lecture and discussion on the behind-the-scene goings on of major league baseball by Dennis Bair

Support for the TBY deli night

Running the Men's club Shabbat service

Lunch meeting at Amici's Italian Restaurant

Pancakes and Manatees breakfast and boat trip to De Leon State Park and Blue Springs State Park

Providing an ice cream Oneg in support of the Sisterhood Shabbat Service

Chanukah Dinner at Gypsy Cab Company

#### **Coming up:**

March: Trip to the Holocaust Museum in Maitland

April: Open Mic Talent Night

April: Trip to Jacksonville for the annual Elliott Carman Memorial Baseball Game to watch the Jacksonville Suns

If anyone is interested in joining the off-site poker club, please contact Sheldon Beasley. Though we have a full house, please let us know if you want to be placed on the waiting list or be advised of future games.





# PIZZAZZZZZZZZZZZZZZZZZZZZZ

## *2016 Spring Luncheon and Fashion Show*

Hosted by Temple Bet Yam Sisterhood

**Date: Thursday, March 24, 2016**

**Time: 11:30 a.m.**

**Hammock Dunes Club, 30 Avenue Royale, Palm Coast, FL 32137**

\$30 per person

Tickets must be purchased by March 14, 2016

Make checks payable to TBY Sisterhood

On April 2, 2016 TBY is holding our first Open Mic/Talent Show.

Temple Bet Yam has talent. We are looking for those of you who would like to sing, play an instrument, tell jokes, do a dramatic reading, or perform similar types of entertainment suitable for a night of family entertainment.

There are no age limitations, auditions, or a screening process.

All entertainers have ten minutes to "do their thing."

If you would like to participate or just want information,

contact Steve Rich at:

[TBYOPENMIC@YAHOO.COM](mailto:TBYOPENMIC@YAHOO.COM)

### **A note from Bernie Levy describing the recent Pancakes and Manatees breakfast and boat trip to De Leon State Park and Blue Springs State Park.**

I want to take this opportunity to thank Earl Brown and my wife Carol for making the Pancakes and Manatees event a rousing success. We arrived at De Leon Park and went to the old mill for a fantastic breakfast. Many of us spent some time at the visitor's center to view movies of the (get ready for this...)-water skiing elephant that was here in the days when De Leon Park was a vacation resort as well as learning about its history-the park, not the elephant.

We then went on to Blue Springs Park to view the manatees in the gorgeous lagoon there and later boarded a boat for a two hour tour on the St. John's River. The wildlife were plentiful, our guide was great, and the weather couldn't have been better. The sun was shining and the sky was blue. What an amazing day.

Thank you to all who participated.

Waiting to board (left to right): Carol Levy, Patty Savage, Bobbi Carman, Earl Brown, Terre Wallach, and Nancy Sorkin



And on board the boat (left to right)  
Earl Brown, Ellen Grolman, Ruth and Larry Kurlandsky





Rabbi Fred and Judy on board



Patty Savage, Terre Wallach, Nancy Sorkin, and Ellen Grolman cooking pancakes



Isabel Sherman and Terre Wallach cooking pancakes and eggs



Patty and Barry Savage



*Above 7 photos all taken by Bernie Levy*

Myron Mensh and Bobbi Carman cooking pancakes and eggs



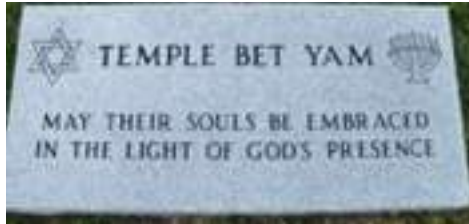
*Above 2 photos with thanks to Nancy Sorkin*

It is our custom at every Shabbat service  
to mention names of friends and loved ones  
who are in need of God's healing power.

OUR CONGREGATION UNITES IN PRAYING FOR REFUAH SHLEMA,  
A SPEEDY RECOVERY

Adonai, open my lips that my mouth may declare your praise.  
As those who came before us were blessed in the presence of the communities that sustained them,  
so we offer our blessings for those among us in need of healing.  
may each of those we pray for have comfort and relief in the healing of body and mind,  
and may each one return in time to health and wholeness and strength.

### TEMPLE BET YAM CEMETERY



Temple Bet Yam recently consecrated a portion of The Craig Memorial Park on Old Moultrie Road in St. Augustine as sacred burial ground in the philosophy and theology of Reform Judaism. This portion is dedicated to Temple Bet Yam, and all Temple members are eligible to purchase burial plots in the TBY section of the Memorial Park. Members may purchase burial plots for themselves, their spouses, their partners, their children, and/or their parents. Following Reform Jewish philosophy, there are no restrictions concerning burial of non-Jewish spouses or partners adjacent to their loved ones.

Those interested in purchasing burial plots as part of their preplanning should contact C. J. Kidd at Craig Memorial Park directly (904-824-1672). The current cost of a burial plot is \$1800 and includes perpetual care.

For further information or questions, contact Marty Cohen.



## CONTRIBUTIONS



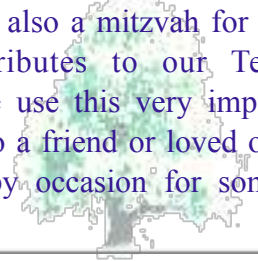
The custom of making offerings/donations as an expression of prayer traces back to Biblical times and has always been a practice of congregations. A donation can be defined as an act of prayer in which the participant extends himself or herself beyond the act of uttering words. It exceeds mere vocal expression and indicates that an act of personal sacrifice has been performed by the donor. The amount of an offering is less important than the deed. A small offering made by a person of limited income is as noble in nature as a larger one given by a person of wealth. THE WORLD IS SUSTAINED BY THREE THINGS: BY TORAH, BY WORSHIP, AND BY TZEDAKAH.

## Trees for Israel

*Toby Weintraub*



We are enjoying huge success with our Trees for Israel. Every tree purchased is not only recognition of some significant event in your life or in the life of someone close to you but is also a mitzvah for Israel and contributes to our Temple fundraising effort. Please use this very important program as a memorial to a friend or loved one or in celebration of a happy occasion for someone dear to you.



### Beineinu

#### Congregants helping Congregants

In the spirit of giving( tsdakah) the “MURRAY WEISS MEMORIAL FUND” has been actively helping those in need. Since its inception the fund has helped to finance the following:

- \*Dental surgery
- \*Tuition for two children's enrollment in a Jewish summer camp
- \*Paid a past due mortgage payment
- \*Helped finance medication for a cancer patient
- \*Provided funds for a past due electric bill.

With the continuing contributions to this meaningful tzdakah fund by you, the congregants and the Murray Weiss foundation, it can continue to face the needs of those who require it.

Let us all be there for those who need the help and guidance for a healthier and more meaningful life.

Please contact me for any questions or information.

Please know that this program is held in the strictest confidence.

Shalom, Mimi Selig





Do you have a simcha you want to commemorate?



*Birth of a grandchild or child?  
 Wedding? Anniversary?  
 Milestone Birthday? Bar/Bat Mitzvah?*

Now you or your family can purchase a plaque to celebrate life's big moments.



sample of an actual plaque!

(actual size 5 1/2" X 8 1/2")

Express your joy in four lines of type for \$180 which includes the plaque, engraving and installation in TBY's commemorative garden wall.



For more information and forms, please contact the TBY office at 904-819-1875 or email [templebetyam@bellsouth.net](mailto:templebetyam@bellsouth.net)



Please note that there are separate forms available in the Temple office for plaques for both the Memorial Board in the sanctuary and for the Celebratory Wall in the garden. Do NOT use the attached Contribution form for this purpose.





## Do you need Child Care during services?

As a reminder, child care is provided free of cost during most regular Friday night Shabbat services. For safety, children need to be old enough to walk, and our child care provider, Sarah Ramirez, cannot be responsible for changing diapers, accompanying children to the restroom, or bottle feeding little ones. We encourage your child to bring a quiet activity to play with, and also ask that they do not run back and forth between child care and the sanctuary too much during services. Thank you very much to Temple Bet Yam for providing this service to families

We look forward to seeing all of you at our Shabbat services.

### EDITOR'S NOTES

#### ***Bev Darkatsh***



I owe a big debt of gratitude to the sharp eyes and grammatical acumen of my two copy-editor elves, Nancy Sorkin and Jackie Witte and to my Mail Maven, Shelly Cohen.

We'd like to thank you for making the decision to take the *Shofar* on line instead of being mailed a print version. It's one of the privileges of membership to receive it this way and also part of the process of the Temple going green -- better for ecology, saves trees and energy. It's also better for the Temple in that it saves us the cost of paper and postage. You can still print it out yourself if you'd prefer to read it that way - I do.

In order to become self-supporting, the *Shofar* is in need of additional advertisers. Please submit the names of the businesses you frequent and the professionals you use so that we can contact them as potential advertisers. You do not have to contact them personally; our *Shofar* advertising lady, Jen Sherman, will do it. All referrals will remain anonymous. Please contact Jen..





## March, April, and May 2016 Dates to Remember:



<p><b>Tuesday, March 1</b> 6:30 - 8:00 p.m. Board Meeting</p> <p><b>Wednesday, March 2</b> 10:00 a.m. - 12:00 p.m. Text Study Group</p> <p><b>Friday, March 4</b> 7:30 p.m. Regular Shabbat Service</p> <p><b>Sunday, March 6</b> 9:00 a.m. - 1:00 p.m. Religious School</p> <p><b>Monday, March 7</b> 6:00 - 9:00 p.m. Choir Practice</p> <p><b>Saturday, March 12</b> 5:00 - 9:00 p.m. Ways &amp; Means Kugel Cook Off</p> <p><b>Sunday, March 13</b> 9:00 a.m. - 12:00 p.m. Religious School 11:00 a.m. - 1:00 p.m. Purim Carnival</p> <p><b>Monday, March 14</b> 6:00 - 9:00 p.m. Choir Practice</p> <p><b>Tuesday, March 15</b> 7:15 - 8:30 p.m. Sisterhood Book Club Book: <u>The Nightingale</u>, by Kristin Hannah; led by Sandi Richmond and Terre Wallace</p> <p><b>Friday, March 18</b> 7:30 p.m. Purim Shabbat Service</p> <p><b>Monday, March 21</b> 6:00 - 9:00 p.m. Choir Practice</p> <p><b>Thursday, March 24</b> 11:30 a.m. - 3:00 p.m. Sisterhood Fashion Show and Luncheon at Hammock Dunes Club Palm Coast</p> <p><b>Monday, March 28</b> 6:00 - 9:00 p.m. Choir Practice</p> <p><b>Wednesday, March 30</b> 6:30 - 8:00 p.m. Special Board Meeting</p> <p><b>Friday, April 1</b> 7:30 p.m. Regular Shabbat Service</p> <p><b>Saturday, April 2</b> 6:30 - 9:00 p.m. Men's Club Open Mic Night</p> <p><b>Sunday, April 3</b> 9:00 a.m. - 12:00 p.m. Religious School</p> <p><b>Monday, April 4</b> 6:00 - 9:00 p.m. Choir Practice</p> <p><b>Tuesday, April 5</b> 6:30 - 8:00 p.m. Board Meeting</p> <p><b>Sunday, April 10</b> 9:00 a.m. - 12:00 p.m. Religious School</p> <p><b>Monday, April 11</b> 6:00 - 9:00 p.m. Choir Practice</p>	<p><b>Tuesday, April 12</b> 7:15 - 8:30 p.m. Sisterhood Book Club Book: <u>Silent Sister</u>, by Diane Chamberlain; led by Patty Savage and co-host to be announced. NOTE DATE CHANGE!</p> <p><b>Thursday, April 14</b> 7:00 - 8:30 p.m. Life Long Learning Trouble in the Tribe</p> <p><b>Saturday, April 16</b> 6:30 - 10:00 p.m. TBY at the Limelight and Silent Auction <i>The 39 Steps</i>, a mystery / whodunit</p> <p><b>Sunday, April 17</b> 9:00 a.m. - 12:00 p.m. Religious School</p> <p><b>Monday, April 18</b> 6:00 - 9:00 p.m. Choir Practice</p> <p><b>Thursday, April 21</b> 8:00 a.m. - 4:00 p.m. Men's Club Holocaust Museum Trip</p> <p><b>Friday, April 22</b> 6:00 p.m. Passover Congregational Seder</p> <p><b>Monday, April 25</b> 6:00 - 9:00 p.m. Choir Practice</p> <p><b>Sunday, May 1</b> 9:00 a.m. - 1:00 p.m. Religious School</p> <p><b>Monday, May 2</b> 6:00 - 9:00 p.m. Choir Practice</p> <p><b>Tuesday, May 3</b> 6:30 - 8:00 p.m. Board Meeting</p> <p><b>Friday, May 6</b> 7:30 Shabbat Service Yom Hashoa Service Soroka B'nai Mitzvah</p> <p><b>Saturday, May 7</b> 10:00 a.m. Lily &amp; Adam Soroka B'nai Mitzvah</p> <p><b>Monday, May 9</b> 6:00 - 9:00 p.m. Choir Practice</p> <p><b>Tuesday, May 10</b> 12:00 - 3:00 p.m. Sisterhood Meeting</p> <p><b>Friday, May 13</b> 6:00 p.m. Family Shabbat Dinner &amp; Service</p> <p><b>Monday, May 16</b> 6:00 - 9:00 p.m. Choir Practice</p> <p><b>Tuesday, May 17</b> 7:15 - 8:30 p.m. Sisterhood Book Club Book: <u>The Secret Chord</u>, by Geraldine Brooks; led by Phyllis Keiser and co-host to be announced.</p> <p><b>Monday, May 23</b> 6:00 - 9:00 p.m. Choir Practice</p> <p><b>Friday, May 27</b> 6:00 p.m. Congregational Meeting &amp; Dinner 7:30 Regular Shabbat Service</p>
--	--

### FIRST ANNUAL TEMPLE BET YAM PUTTING TOURNAMENT

To Benefit The First Tee of North Florida and Temple Bet Yam Children's Programs

Was Held at The World Golf Hall of Fame  
Sunday, October 25, 2015

A Special "Thank You" TO STUART SOROKA, M.D.

AND



# SUPPORT OUR ADVERTISERS

## RIVER GARDEN IS *OUR* COMMUNITY AGENCY

SEVEN-TIME RECIPIENT OF THE PRESTIGIOUS  
**GOVERNOR'S GOLD SEAL AWARD**  
FOR EXCELLENCE IN LONG-TERM CARE



AGENCY FOR HEALTH CARE ADMINISTRATION  
**A 5-STAR RATED COMMUNITY**  
CENTERS FOR MEDICARE *and* MEDICAID SERVICES



Personalized Care With Exceptional Results

904-886-8454

[rivergarden.org/rehab](http://rivergarden.org/rehab)

Rehabilitation



Peace of Mind in a Supportive Environment

904-288-7858

[rivergarden.org/adultday](http://rivergarden.org/adultday)

Adult Day Care



Elegant Retirement Living for Active Seniors

904-292-2683

[rivergarden.org/coves](http://rivergarden.org/coves)

Independent Living



Enabling Clients to Remain In Their Homes

904-288-7851

[rivergarden.org/homehealth](http://rivergarden.org/homehealth)

Home Health Care




Rehabilitation | Adult Day Care | Home Health Care | Long-Term Care | Memory Care | Independent Living

Jewish Dietary Laws Observed. River Garden is a beneficiary agency of the Jewish Federation of Jacksonville

11401 Old St. Augustine Road · Jacksonville, FL 32258 · 904-260-1818 · [www.rivergarden.org](http://www.rivergarden.org)



# SUPPORT OUR ADVERTISERS



**CRAIG FUNERAL HOME**  
**100**  
 1915 *6* 2015  
*Celebrating the Life of a Community*



**A & J Associates**  
 Computer consultants, training,  
 networking and repair  
**WINDOWS & MAC**  
 (904)-254-9524  
 (904)-460-9569  
[jmarx46@comcast.net](mailto:jmarx46@comcast.net)  
**Joseph Marx**  
 President  
 1955 A1A South  
 PMB 131  
 St. Augustine, FL 32080

**Foreign & Domestic**  
**FELDMAN**  
**AUTO REPAIR**  
 Gary Feldman, Master Technician  
 3816 N. Ponce de Leon Blvd.  
 St. Augustine, Florida 32084  
**(904) 217-0865**




**Comprehensive MedPsych Systems**  
**Psychological Services of St. Augustine**  
**Karen Selig, M.A.**  
 Clinical Director  
 Licensed Marriage and Family Therapist, MT128  
 1100-1 S. Ponce de Leon Blvd.  
 St. Augustine, FL 32054  
 (904) 824-7733 x2509 Fax (904) 829-9768  
[kselig@medpsych.net](mailto:kselig@medpsych.net)  
[www.medpsych.net](http://www.medpsych.net) \* [www.psaicare.com](http://www.psaicare.com)



**Stuart A. Soroka, M.D.**  

**G.I. Associates**  
*of St. Augustine*  
 —————  
*Consultants in Digestive Disorders*  
 216 Southpark Circle East  
 St. Augustine, FL 32086  
 Tel 904-824-6108  
 Fax 904-823-9613  
[www.GI-Associates.com](http://www.GI-Associates.com)



**Nancy Cohen, RDN, LDN**  
 Nutritionist, Usui Reiki Master,  
 IET Master/Teacher, Universal  
 Rays Healer  
[nuc@feedingTheBodyFeedingTheSoul.com](mailto:nuc@feedingTheBodyFeedingTheSoul.com)  
[www.feedingTheBodyFeedingTheSoul.com](http://www.feedingTheBodyFeedingTheSoul.com)



*look, feel and live  
 younger, longer  
 with essential oils*  
**dōTERRA**  
 Wellness Advocate  
  
[www.doterradiva.com](http://www.doterradiva.com)  
 Jeannie Rissman  
 904.219.9161 [tennis.life@yahoo.com](mailto:tennis.life@yahoo.com)  
 **Certified Pure Therapeutic Grade**

# SUPPORT OUR ADVERTISERS

**Premium Advertising Space**  
 Still available in the Temple Bet Yam Shofar  
 Ideal location: corner lot (approx. 2" x 3.5")  
 near local businesses.

Our rates are reasonable and we will adapt the presentation to suit your specifications.  
 Please contact Jen Sherman: (904) 826-7640 or  
 NYLUCA2000@yahoo.com

**Ammar**  
**Beauty Supply Co.**


PROFESSIONAL HAIR & NAIL SUPPLIES • SKINCARE •  
 WIGS • HAIR EXTENSIONS • COSMETICS • ACCESSORIES •  
 BARBER SUPPLIES • SALON EQUIPMENT • THEATRICAL MAKE-UP

223 W. King Street  
 St. Augustine, FL 32084

904/829-6544  
 Fax: 904/829-3032

**BRUCE R. WITTEN, M.D., P.A.**  
 OTOLARYNGOLOGY  
 FACIAL PLASTIC SURGERY  
 SLEEP APNEA  
 SNORING  
**(904) 829-6441**

301 Health Park Blvd., Suite 323, St. Augustine, Florida



FULLY INSURED  
 35 YEARS EXPERIENCE

RESIDENTIAL  
 COMMERCIAL

  
**K.D.'S WINDOW CLEANING  
 & JANITORIAL CO.**  
**904-826-3490**

KEN DIAMOND  
 REPRESENTATIVE

LIC.# 224000027458  
 P.O. BOX 1275  
 ST. AUGUSTINE, FL 32085-1275




**Jan Felixson, L.C.S.W.**  
 Licensed Clinical Social Worker

Individual, Family, Couples Therapist  
 2200 N. Ponce de Leon Blvd, Ste 3  
 St. Augustine, FL 32084

T: 904-824-1152  
 C: 904-501-8103  
 SW2848  
 MT584

**Feel Flex and Flow Therapeutic Massage**  
 Revitalize Your Body and Awaken Your Senses...



Nationally Certified, Licensed and Registered  
 Specializing in Reflexology and Myofascial Techniques

443 480 5158

feelflexandflow.com

**Lisa M. Mundy**  
 Massage Therapist  
 lisamariemundy@yahoo.com

**Ad Rates**

Size	Cost
Full Page (9x7.5)	\$430/year
Half Page (7.5x5 or 9x3.5)	\$220/yr
1/4 Page (5x3.5 or 7.5x2)	\$115/yr
1/8 Page (3.5x2)	\$60/year